



WDVO Roof Fans

WDVO fans comply with the EU energy efficiency requirements for fans and ventilation systems. They are high-performance fans with excellent air efficiency as well as enhanced noise level control and air flow adjustability according to current needs.

WDVO fans with horizontal airflow are designed for use in locations where continuous mechanical ventilation is required, e.g. in production halls, warehouses, retail centres, shops, offices, etc.

The concentrations of corrosive vapours and gases or particulates in the exhaust air should not exceed the acceptable limits specified by environmental regulations.

PRODUCT DESCRIPTION

WDVO – fans with horizontal airflow – 4 sizes from 31 to 45;

Components:

- High-performance rotor made from high-strength composite materials and provided with an integrated asynchronous electric motor;
- Enclosure manufactured in laminate;
- Bases made of galvanised steel sheets.

The fans are designed for installation on PU or PUT universal bases (with sound insulation).

WORKING CONDITIONS

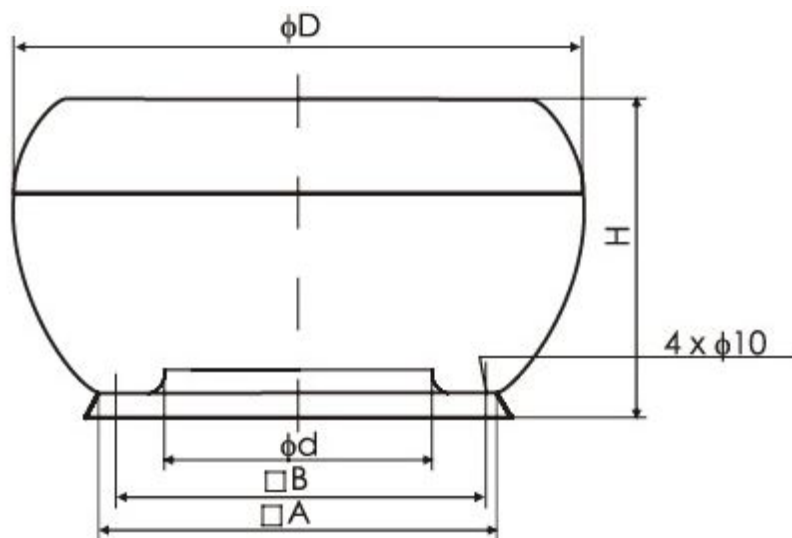
WDVO fans are provided with the following motors:

- (AC/4J) single-phase asynchronous with five-step transformer speed control for sizes 31; 35; 40; 45;
- (AC/4T) three-phase asynchronous with five-step transformer speed control for sizes 31; 35; 40; 45.
- (EC/J) single-phase electronically commutated for sizes 31; 35; 40; 45;
- (EC/T) three-phase electronically commutated for sizes 35; 40; 45.

With the manufacturer's agreement WDVO fans may be provided with a ~900-rpm 6-pole asynchronous motor with five-step transformer speed.

WDVO-31-EC/J

DIMENSIONS

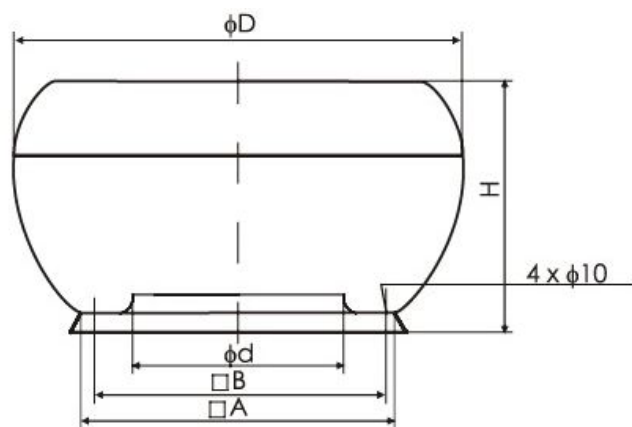


Ød [mm]	ØD [mm]	A [mm]	B [mm]	H [mm]	Weight [kg]
231	807	605	480	465	21,5

Impeller type	RH31V-6IK.BD.VR
Motor type	MK090-40
Supply voltage	1~230V/50Hz
Motor power [kW]	0,56
Current [A]	2,8
Revolutions [rpm]	2100
Compliance	ErP 2015, CE

WDVO-35-EC/J

DIMENSIONS



CHARACTERISTICS:



Ød [mm]	ØD [mm]	A [mm]	B [mm]	H [mm]	Weight [kg]
258	807	605	480	465	25,5

Impeller type	RH35V-ZIK.DC.VR
Motor type	MK116-36
Supply voltage	1~230V/50Hz
Motor power [kW]	0,98
Current [A]	5,0
Revolutions [rpm]	2090
Compliance	ErP 2015, CE

WDVO-35-EC/T

DIMENSIONS



CHARACTERISTICS:



Ød [mm]	ØD [mm]	A [mm]	B [mm]	H [mm]	Weight [kg]
258	807	605	480	465	25,5

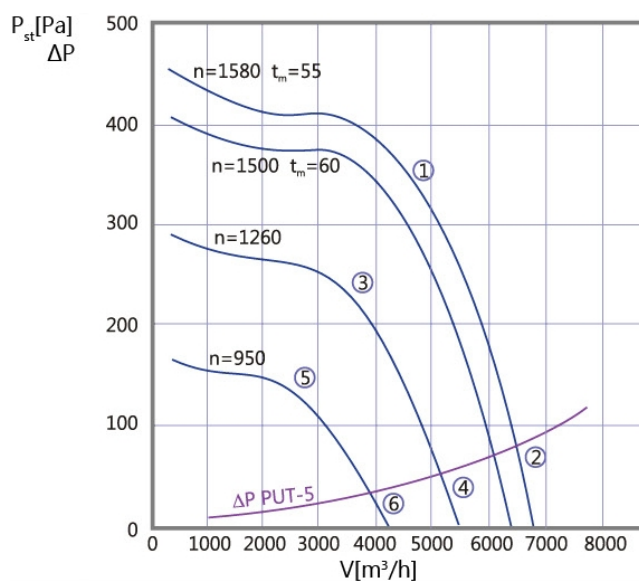
Impeller type	RH35V-ZIK.DC.VR
Motor type	MK116-36
Supply voltage	3~400V/50Hz
Motor power [kW]	1,50
Current [A]	2,4
Revolutions [rpm]	2430
Compliance	ErP 2015, CE

WDVO-40-EC/J

DIMENSIONS



CHARACTERISTICS:



Ød [mm]	ØD [mm]	A [mm]	B [mm]	H [mm]	Weight [kg]
298	927	675	560	560	29,5

Impeller type	RH40V-ZIK.DC.VR
Motor type	MK116-36
Supply voltage	1~230V/50Hz
Motor power [kW]	0,84
Current [A]	4,2
Revolutions [rpm]	1580
Compliance	ErP 2015, CE

WDVO-40-EC/T

DIMENSIONS



CHARACTERISTICS:

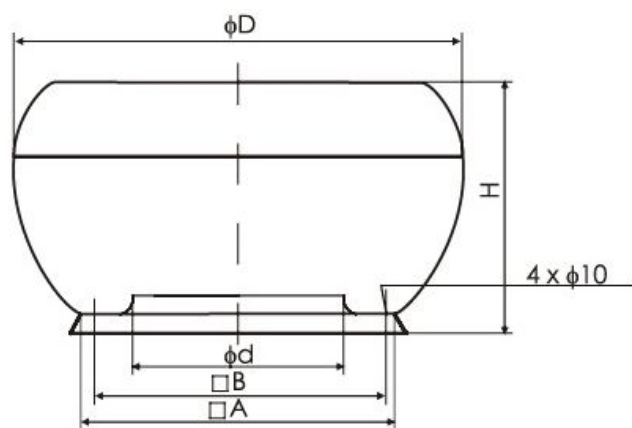


Ød [mm]	ØD [mm]	A [mm]	B [mm]	H [mm]	Weight [kg]
298	927	675	560	560	29,5

Impeller type	RH40V-ZIK.DC.VR
Motor type	MK116-36
Supply voltage	3~400V/50Hz
Motor power [kW]	1,30
Current [A]	2,1
Revolutions [rpm]	1840
Compliance	ErP 2015, CE

WDVO-45-EC/J

DIMENSIONS



CHARACTERISTICS:

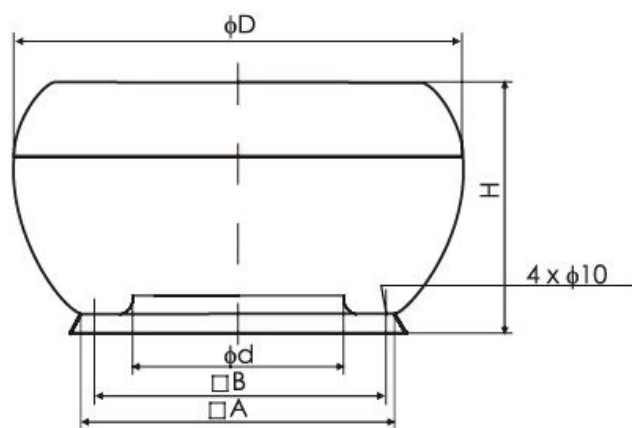


Ød [mm]	ØD [mm]	A [mm]	B [mm]	H [mm]	Weight [kg]
331	927	675	630	560	32,5

Impeller type	RH45V-ZIK.DC.VR
Motor type	MK116-36
Supply voltage	1~230V/50Hz
Motor power [kW]	0,64
Current [A]	3,3
Revolutions [rpm]	1220
Compliance	ErP 2015, CE

WDVO-45-EC/T

DIMENSIONS



CHARACTERISTICS:

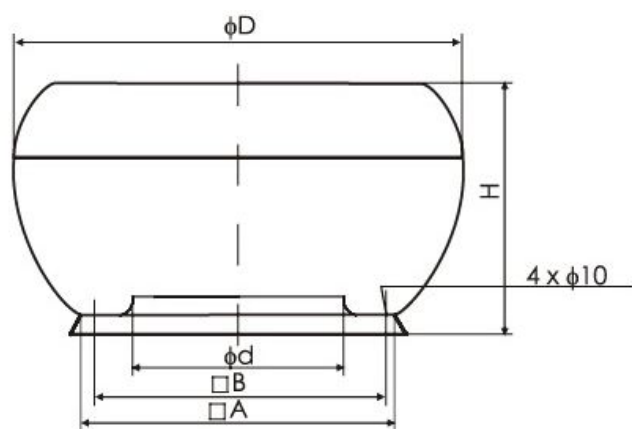


Ød [mm]	ØD [mm]	A [mm]	B [mm]	H [mm]	Weight [kg]
331	927	675	630	560	32,5

Impeller type	RH45V-ZIK.DC.VR
Motor type	MK116-36
Supply voltage	3~400V/50Hz
Motor power [kW]	1,10
Current [A]	1,8
Revolutions [rpm]	1410
Compliance	ErP 2015, CE

WDVO-31-AC/4J

DIMENSIONS



CHARACTERISTICS:

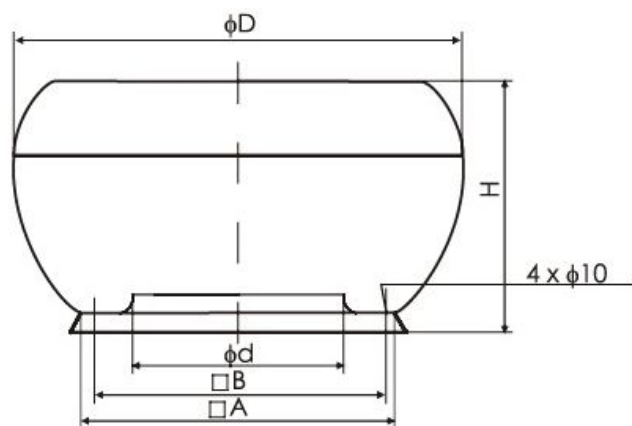


Ød [mm]	ØD [mm]	A [mm]	B [mm]	H [mm]	Weight [kg]
231	807	605	480	465	21

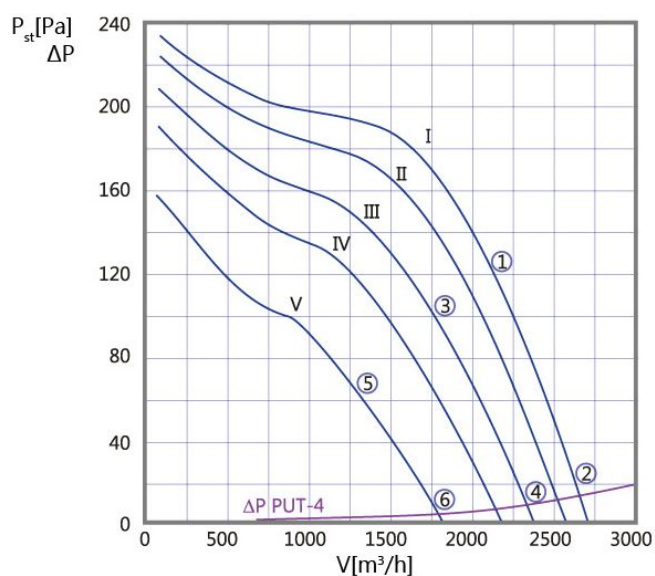
Impeller type	RH31V-4EK.2F.VR
Supply voltage	1~230V/50Hz
Motor power [kW]	0,22
Current[A]	1,10
Revolutions [rpm]	1370
Minimum temperature [OC]	-15
Maximum temperature [OC]	+60
Compliance	ErP 2015, CE

WDVO-31-AC/4T

DIMENSIONS



CHARACTERISTICS:

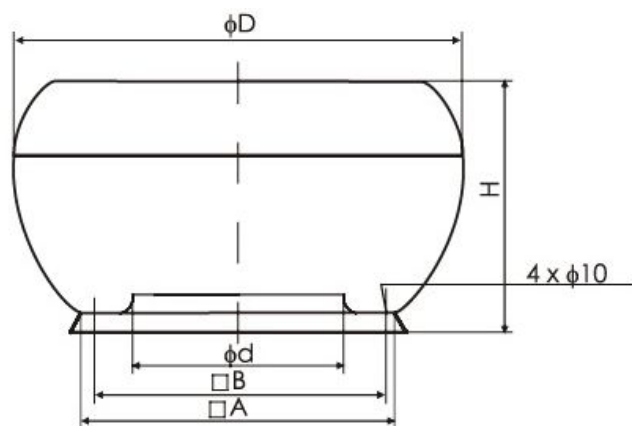


Ød [mm]	ØD [mm]	A [mm]	B [mm]	H [mm]	Weight [kg]
231	807	605	480	465	21

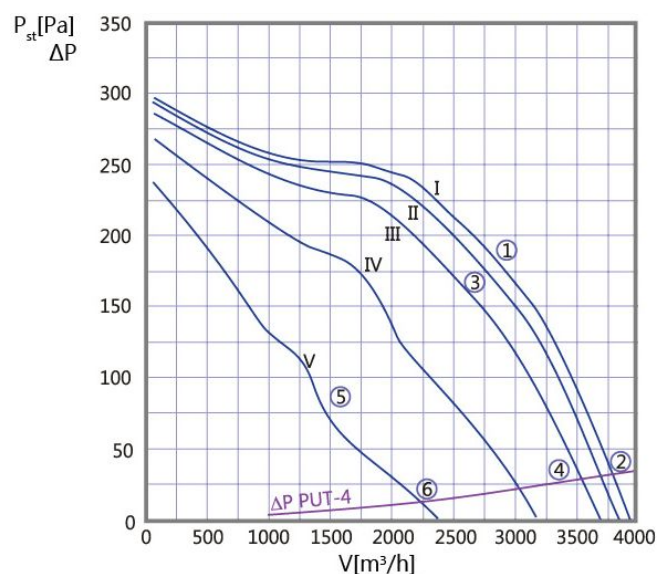
Impeller type	RH31V-4DK.2F.VR
Supply voltage	3~400V/50Hz
Motor power [kW]	0,21
Current[A]	0,50
Revolutions [rpm]	1390
Minimum temperature [OC]	-15
Maximum temperature [OC]	+60
Compliance	ErP 2015, CE

WDVO-35-AC/4J

DIMENSIONS



CHARACTERISTICS:

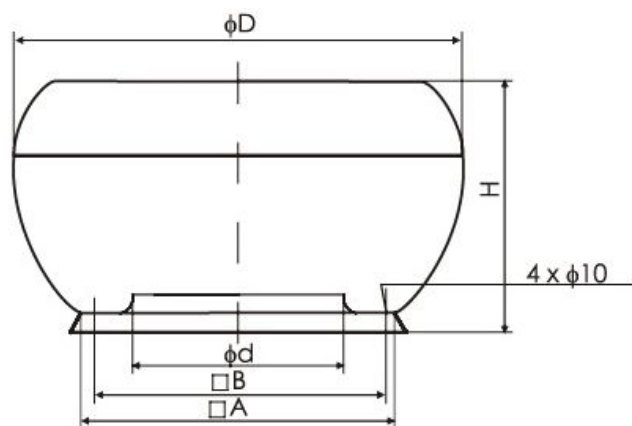


Ød [mm]	ØD [mm]	A [mm]	B [mm]	H [mm]	Weight [kg]
258	807	605	480	465	25

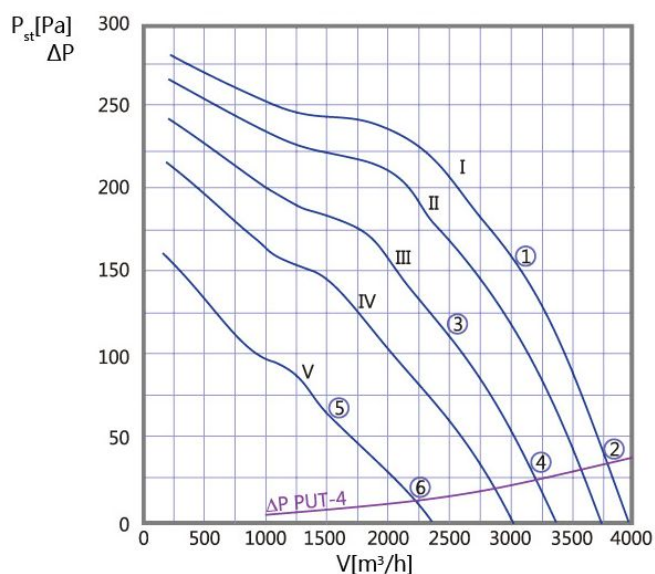
Impeller type	RH35V-4EK.4F.VR
Supply voltage	1~230V/50Hz
Motor power [kW]	0,37
Current[A]	1,85
Revolutions [rpm]	1390
Minimum temperature [OC]	-15
Maximum temperature [OC]	+60
Compliance	ErP 2015, CE

WDVO-35-AC/4T

DIMENSIONS



CHARACTERISTICS:



Ød [mm]	ØD [mm]	A [mm]	B [mm]	H [mm]	Weight [kg]
258	807	605	480	465	25

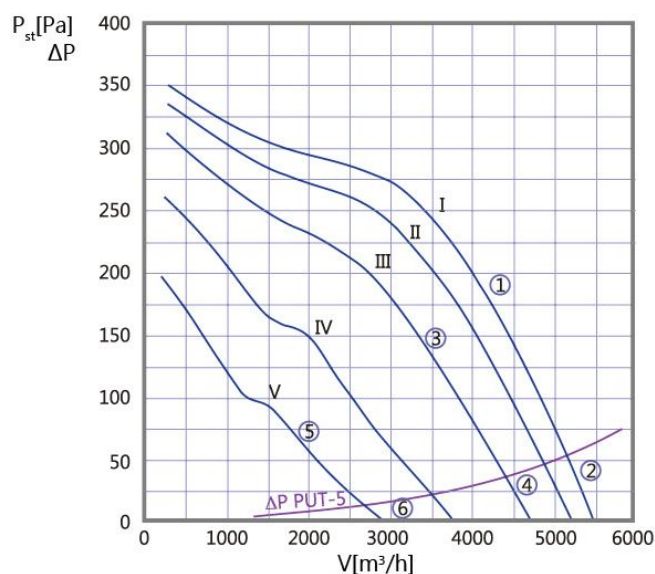
Impeller type	RH35V-4DK.4C.VR
Supply voltage	3~400V/50Hz
Motor power [kW]	0,33
Current[A]	0,68
Revolutions [rpm]	1380
Minimum temperature [OC]	-15
Maximum temperature [OC]	+60
Compliance	ErP 2015, CE

WDVO-40-AC/4J

DIMENSIONS



CHARACTERISTICS:



Ød [mm]	ØD [mm]	A [mm]	B [mm]	H [mm]	Weight [kg]
298	927	675	560	560	30

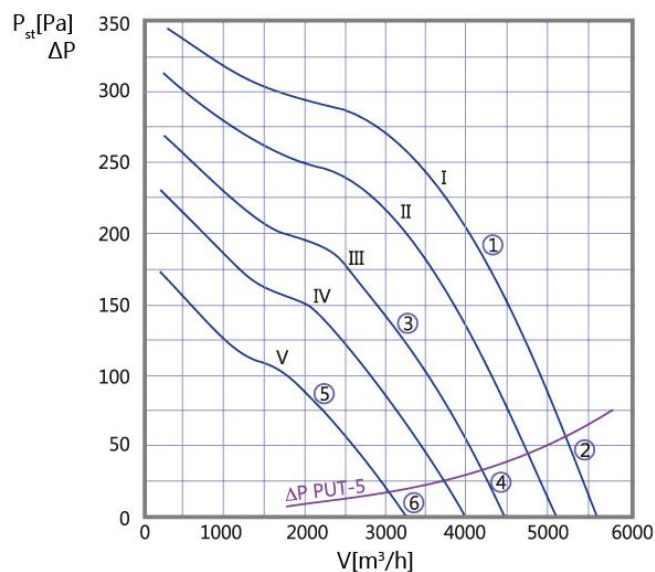
Impeller type	RH40V-4EK.4I.VR
Supply voltage	1~230V/50Hz
Motor power [kW]	0,58
Current[A]	2,60
Revolutions [rpm]	1270
Minimum temperature [OC]	-15
Maximum temperature [OC]	+60
Compliance	ErP 2015, CE

WDVO-40-AC/4T

DIMENSIONS



CHARACTERISTICS:



Ød [mm]	ØD [mm]	A [mm]	B [mm]	H [mm]	Weight [kg]
298	927	675	560	560	30

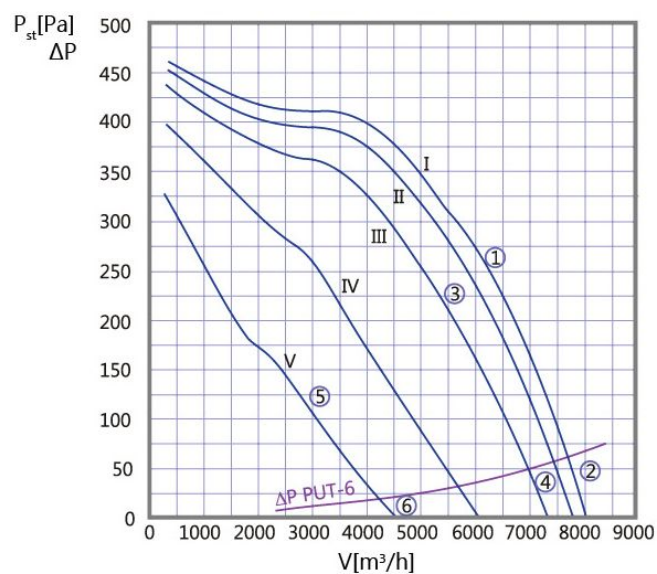
Impeller type	RH40V-4DK.4I.VR
Supply voltage	3~400V/50Hz
Motor power [kW]	0,54
Current[A]	1,20
Revolutions [rpm]	1290
Minimum temperature [OC]	-15
Maximum temperature [OC]	+60
Compliance	ErP 2015, CE

WDVO-45-AC/4J

DIMENSIONS



CHARACTERISTICS:



Ød [mm]	ØD [mm]	A [mm]	B [mm]	H [mm]	Weight [kg]
331	927	675	630	560	42

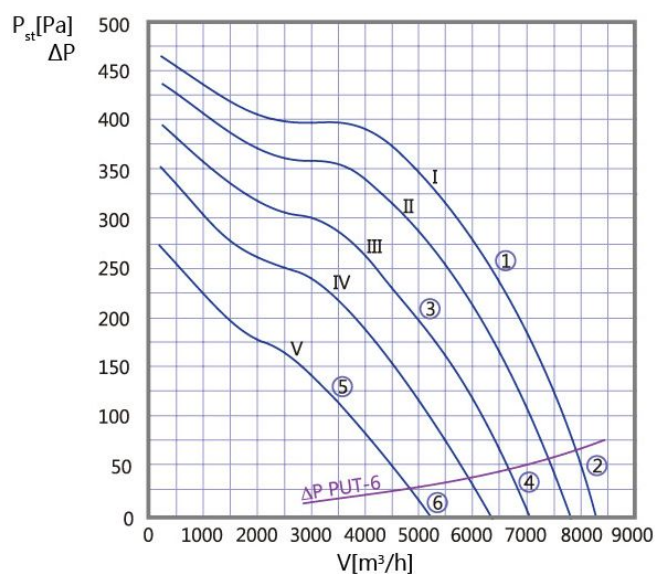
Impeller type	RH45V-4EK.6K.VR
Supply voltage	1~230V/50Hz
Motor power [kW]	1,10
Current[A]	5,20
Revolutions [rpm]	1380
Minimum temperature [OC]	-15
Maximum temperature [OC]	+60
Compliance	ErP 2015, CE

WDVO-45-AC/4T

DIMENSIONS



CHARACTERISTICS:



Ød [mm]	ØD [mm]	A [mm]	B [mm]	H [mm]	Weight [kg]
331	927	675	630	560	42

Impeller type	RH45V-4DK.6F.VR
Supply voltage	3~400V/50Hz
Motor power [kW]	1,0
Current[A]	1,95
Revolutions [rpm]	1370
Minimum temperature [OC]	-15
Maximum temperature [OC]	+60
Compliance	ErP 2015, CE