

## WDV Roof Fans

**WDV fans comply with the EU energy efficiency requirements for fans and ventilation systems. They are high-performance fans with excellent air efficiency as well as enhanced noise level control and air flow adjustability according to current needs.**

WDV fans with vertical airflow are designed for use in locations where continuous mechanical ventilation is required, e.g. in production halls, warehouses, retail centres, shops, offices, etc.

The concentrations of corrosive vapours and gases or particulates in the exhaust air should not exceed the acceptable limits specified by environmental regulations.

### PRODUCT DESCRIPTION

WDV – fans with vertical airflow in a square enclosure – 7 sizes from 31 to 63;

Components:

- High-performance rotor made from high-strength composite materials and provided with an integrated asynchronous electric motor;
- Enclosure manufactured in aluminium;
- Bases made of galvanised steel sheets.

The fans are designed for installation on PU or PUT universal bases (with sound insulation).

### WORKING CONDITIONS

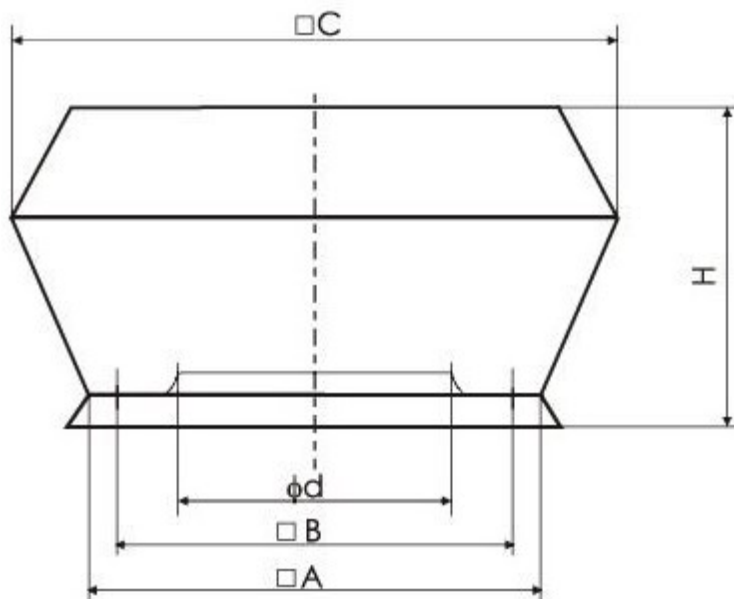
WDV fans are provided with the following motors:

- (AC/4J) single-phase asynchronous with five-step transformer speed control for sizes 31; 35; 40, 45 and 50;
- (AC/4T) three-phase asynchronous with five-step transformer speed control for sizes 31; 35; 40; 45; 50, 56 and 63.
- (EC/J) single-phase electronically commutated for sizes 31; 35; 40, 45;
- (EC/T) three-phase electronically commutated for sizes 35; 40; 45; 50, 56 i 63.

With the manufacturer's agreement, WDV fans may be provided with a ~900-rpm 6-pole asynchronous motor with five-step transformer speed.

## WDV-31-EC/J

### DIMENSIONS

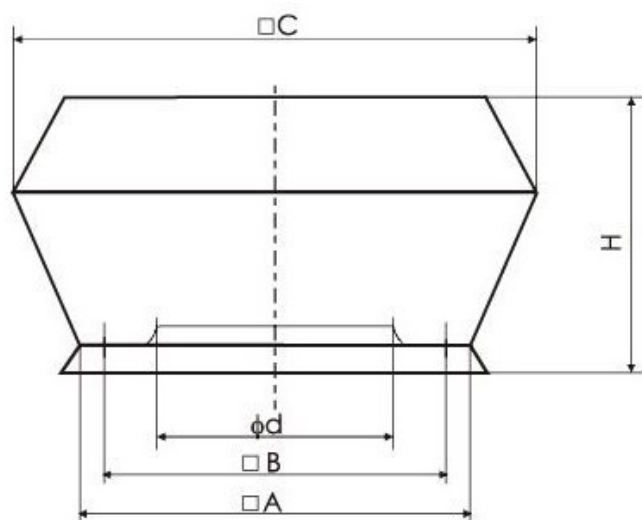


Ød [mm]	A [mm]	B [mm]	C [mm]	H [mm]	Weight [kg]
231	552	480	715	386	19

Impeller type	RH31V-6IK.BD.VR
Motor type	MK090-40
Supply voltage	1~230V/50Hz
Motor power [kW]	0,56
Current [A]	2,8
Revolutions [rpm]	2100
Compliance	ErP 2015, CE

# WDV-35-EC/J

## DIMENSIONS



## CHARACTERISTICS:

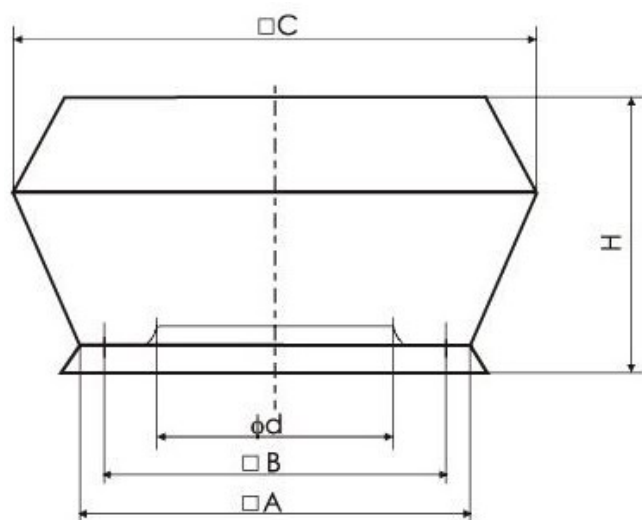


Ød [mm]	A [mm]	B [mm]	C [mm]	H [mm]	Weight [kg]
258	552	480	735	423	23,5

Impeller type	RH35V-ZIK.DC.VR
Motor type	MK116-36
Supply voltage	1~230V/50Hz
Motor power [kW]	0,98
Current [A]	5,0
Revolutions [rpm]	2090
Compliance	ErP 2015, CE

# WDV-35-EC/T

## DIMENSIONS



## CHARACTERISTICS:



Ød [mm]	A [mm]	B [mm]	C [mm]	H [mm]	Weight [kg]
258	552	480	735	423	23,5

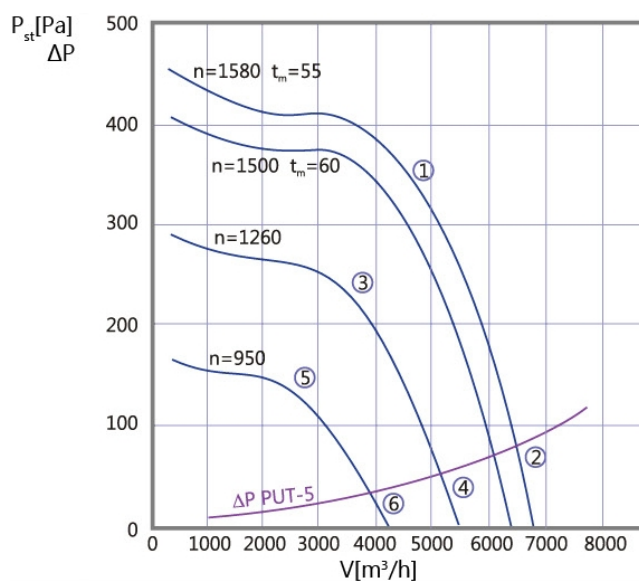
Impeller type	RH35V-ZIK.DC.VR
Motor type	MK116-36
Supply voltage	3~400V/50Hz
Motor power [kW]	1,50
Current [A]	2,4
Revolutions [rpm]	2430
Compliance	ErP 2015, CE

# WDV-40-EC/J

## DIMENSIONS



## CHARACTERISTICS:



Ød [mm]	A [mm]	B [mm]	C [mm]	H [mm]	Weight [kg]
298	632	560	835	464	27,5

Impeller type	RH40V-ZIK.DC.VR
Motor type	MK116-36
Supply voltage	1~230V/50Hz
Motor power [kW]	0,84
Current [A]	4,2
Revolutions [rpm]	1580
Compliance	ErP 2015, CE

# WDV-40-EC/T

## DIMENSIONS



## CHARACTERISTICS:



Ød [mm]	A [mm]	B [mm]	C [mm]	H [mm]	Weight [kg]
298	632	560	835	464	27,5

Impeller type	RH40V-ZIK.DC.VR
Motor type	MK116-36
Supply voltage	3~400V/50Hz
Motor power [kW]	1,30
Current [A]	2,1
Revolution [rpm]	1840
Compliance	ErP 2015, CE

# WDV-45-EC/J

## DIMENSIONS



## CHARACTERISTICS:



Ød [mm]	A [mm]	B [mm]	C [mm]	H [mm]	Weight [kg]
331	702	630	922	501	33,0

Impeller type	RH45V-ZIK.DC.VR
Motor type	MK116-36
Supply	1~230V/50Hz
Motor power [kW]	0,64
Current [A]	3,3
Revolutions [rpm]	1220
Compliance	ErP 2015, CE

# WDV-45-EC/T

## DIMENSIONS



## CHARACTERISTICS:



Ød [mm]	A [mm]	B [mm]	C [mm]	H [mm]	Weight [kg]
331	702	630	922	501	33,0

Impeller type	RH45V-ZIK.DC.VR
Motor type	MK116-36
Supply voltage	3~400V/50Hz
Motor power [kW]	1,10
Current [A]	1,8
Revolutions [rpm]	1450
Compliance	ErP 2015, CE



# WDV-50-EC/T

## DIMENSIONS



## CHARACTERISTICS:

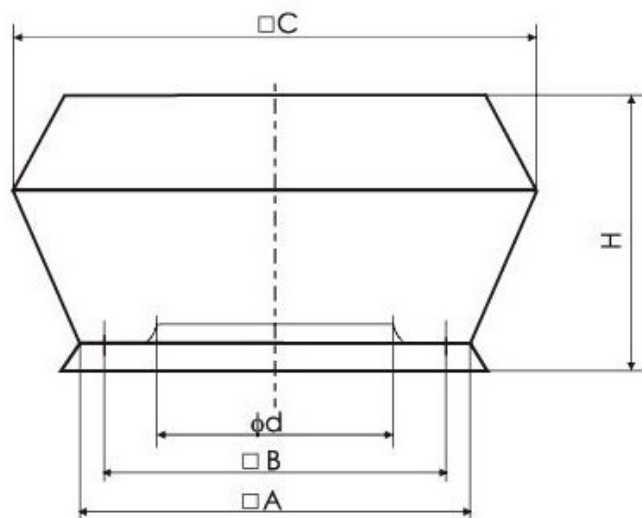


Ød [mm]	A [mm]	B [mm]	C [mm]	H [mm]	Weight [kg]
366	782	710	1032	563	48,0

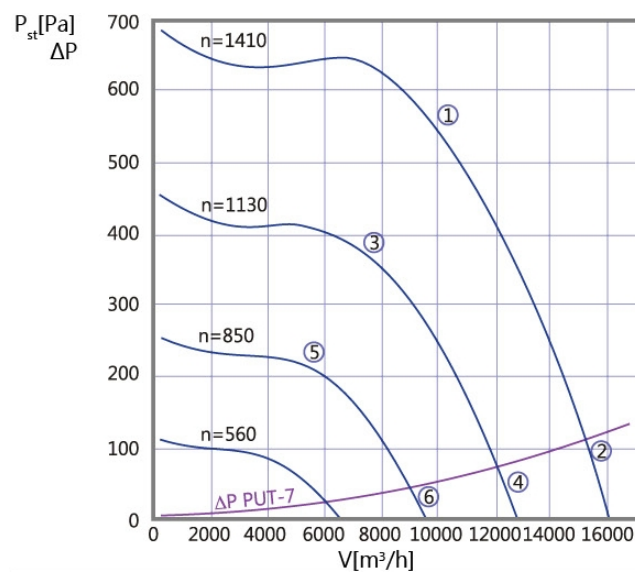
Impeller type	RH50V-ZIK.GG.VR
Motor type	MK152-56
Supply voltage	3~400V/50Hz
Motor power [kW]	3,10
Current [A]	5,0
Revolutions [rpm]	1770
Compliance	ErP 2015, CE

# WDV-56-EC/T

## DIMENSIONS



## CHARACTERISTICS:



Ød [mm]	A [mm]	B [mm]	C [mm]	H [mm]	Weight [kg]
408	782	710	1060	620	53,0

Impeller type	RH56V-ZIK.GG.VR
Motor type	MK152-56
Supply voltage	3~400V/50Hz
Motor power [kW]	2,60
Current [A]	4,2
Revolutions [rpm]	1410
Compliance	ErP 2015, CE

## WDV-63-EC/T

### DIMENSIONS



### CHARACTERISTICS:



Ød [mm]	A [mm]	B [mm]	C [mm]	H [mm]	Weight [kg]
454	872	800	1182	687	61,5

Impeller type	RH63V-ZIK.GG.VR
Motor type	MK152-56
Supply voltage	3~400V/50Hz
Motor power [kW]	2,10
Current [A]	3,4
Revolutions [rpm]	1090
Compliance	ErP 2015, CE

## WDV-31-AC/4J

### DIMENSIONS



### CHARACTERISTICS:

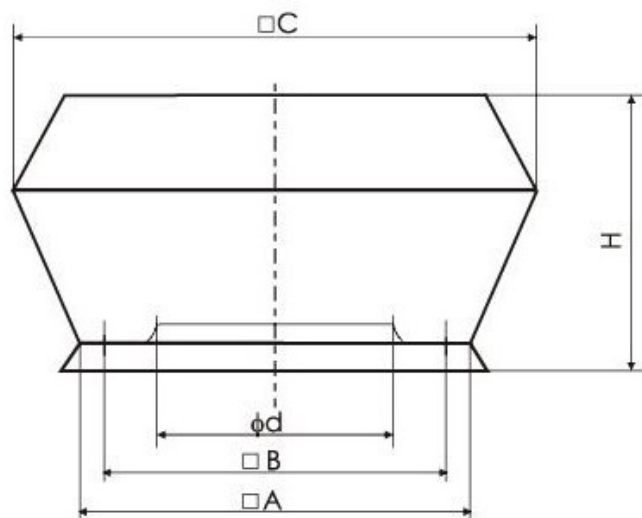


Ød [mm]	A [mm]	B [mm]	C [mm]	H [mm]	Weight [kg]
231	552	480	715	386	18,5

Motor type	RH31V-4EK.2F.VR
Supply voltage	1~230V/50Hz
Motor power [kW]	0,22
Current [A]	1,10
Revolutions [rpm]	1370
Minimum temperature [OC]	-15
Maximum temperature [OC]	+60
Compliance	ErP 2015, CE

## WDV-35-AC/4J

### DIMENSIONS



### CHARACTERISTICS:



Ød [mm]	A [mm]	B [mm]	C [mm]	H [mm]	Weight [kg]
258	552	480	735	423	22,5

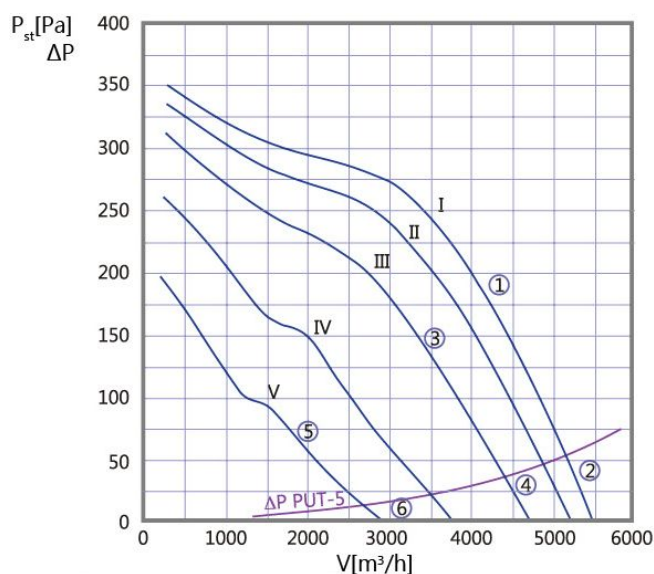
Motor type	RH35V-4EK.4F.VR
Supply voltage	1~230V/50Hz
Motor power [kW]	0,37
Current [A]	1,85
Revolutions [rpm]	1390
Minimum temperature [OC]	-15
Maximum temperature [OC]	+60
Compliance	ErP 2015, CE

## WDV-40-AC/4J

### DIMENSIONS



### CHARACTERISTICS:

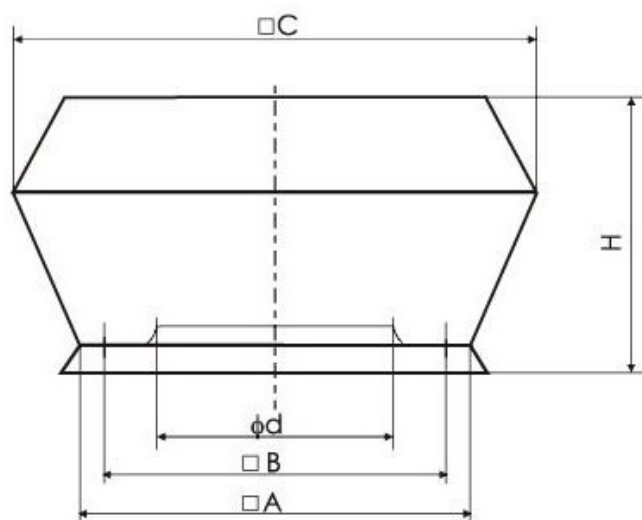


Ød [mm]	A [mm]	B [mm]	C [mm]	H [mm]	Weight [kg]
298	632	560	835	464	28,5

Motor type	RH40V-4EK.4I.VR
Supply voltage	1~230V/50Hz
Motor power [kW]	0,58
Current [A]	2,60
Revolutions [rpm]	1270
Minimum temperature [OC]	-15
Maximum temperature [OC]	+60
Compliance	ErP 2015, CE

## WDV-45-AC/4J

### DIMENSIONS



### CHARACTERISTICS:



Ød [mm]	A [mm]	B [mm]	C [mm]	H [mm]	Weight [kg]
331	702	630	922	501	43,0

Motor type	RH45V-4EK.6K.VR
Supply voltage	1~230V/50Hz
Motor power [kW]	1,10
Current [A]	5,20
Revolutions [rpm]	1380
Minimum temperature [OC]	-15
Maximum temperature [OC]	+60
Compliance	ErP 2015, CE

## WDV-50-AC/4J

### DIMENSIONS



### CHARACTERISTICS:



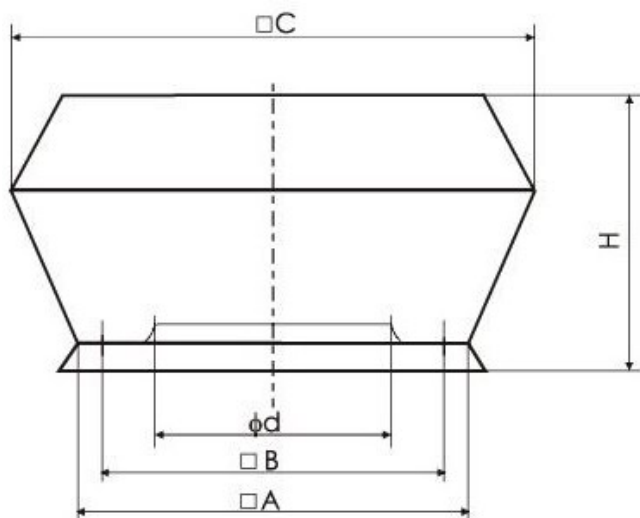
Ød [mm]	A [mm]	B [mm]	C [mm]	H [mm]	Weight [kg]
366	782	710	1032	563	53,0

Motor type	RH50V-4EK.6N.VR
Supply voltage	1~230V/50Hz
Motor power [kW]	1,65
Current [A]	7,40
Revolutions [rpm]	1350
Minimum temperature [OC]	-15
Maximum temperature [OC]	+60
Compliance	ErP 2015, CE



## WDV-31-AC/4T

### DIMENSIONS



### CHARACTERISTICS:



Ød [mm]	A [mm]	B [mm]	C [mm]	H [mm]	Weight [kg]
231	552	480	715	386	18,5

Motor type	RH31V-4DK.2F.VR
Supply voltage	3~400V/50Hz
Motor power [kW]	0,21
Current [A]	0,50
Revolutions [rpm]	1390
Minimum temperature [OC]	-15
Maximum temperature [OC]	+60
Compliance	ErP 2015, CE

## WDV-35-AC/4T

### DIMENSIONS



### CHARACTERISTICS:



$\varnothing d$ [mm]	A [mm]	B [mm]	C [mm]	H [mm]	Weight [kg]
258	552	480	735	423	22,5

Motor type	RH35V-4DK.4C.VR
Supply voltage	3~400V/50Hz
Motor power [kW]	0,33
Current [A]	0,68
Revolutions [rpm]	1380
Minimum temperature [OC]	-15
Maximum temperature [OC]	+60
Compliance	ErP 2015, CE

## WDV-40-AC/4T

### DIMENSIONS



### CHARACTERISTICS:



$\varnothing d$ [mm]	A [mm]	B [mm]	C [mm]	H [mm]	Weight [kg]
298	632	560	835	464	28,5

Motor type	RH40V-4DK.4I.VR
Supply voltage	3~400V/50Hz
Motor power [kW]	0,54
Current [A]	1,20
Revolutions [rpm]	1290
Minimum temperature [OC]	-15
Maximum temperature [OC]	+60
Compliance	ErP 2015, CE

# WDV-45-AC/4T

## DIMENSIONS



## CHARACTERISTICS:

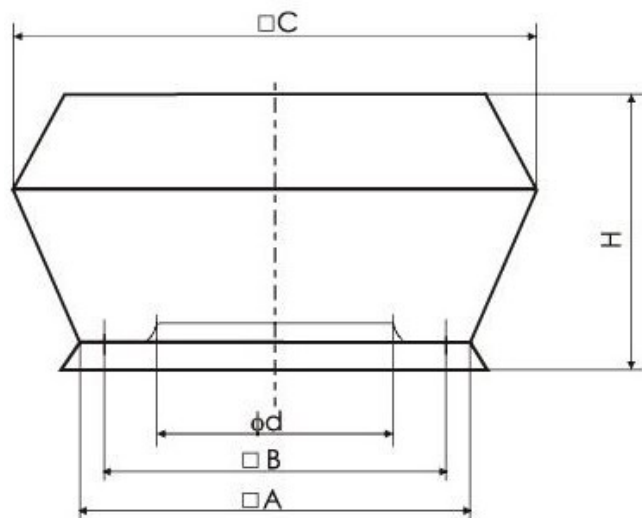


Ød [mm]	A [mm]	B [mm]	C [mm]	H [mm]	Weight [kg]
331	702	630	922	501	43,0

Motor type	RH45V-4DK.6F.VR
Supply voltage	3~400V/50Hz
Motor power [kW]	1,0
Current [A]	1,95
Revolutions [rpm]	1370
Minimum temperature [OC]	-15
Maximum temperature [OC]	+60
Compliance	ErP 2015, CE

## WDV-50-AC/4T

### DIMENSIONS



### CHARACTERISTICS:

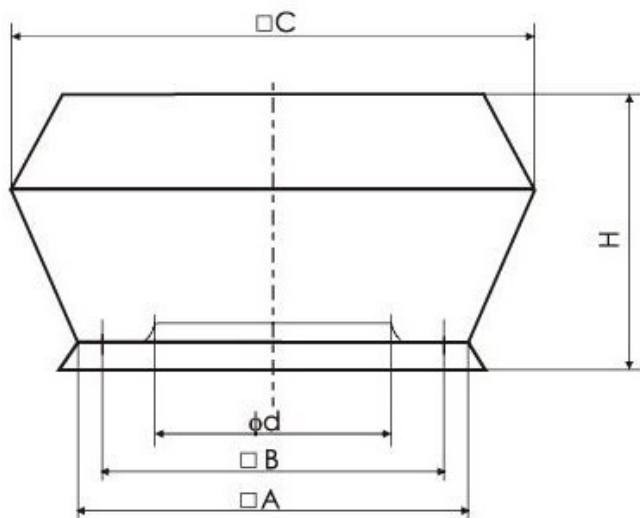


Ød [mm]	A [mm]	B [mm]	C [mm]	H [mm]	Weight [kg]
366	782	710	1032	563	53,0

Motor type	RH50V-4DK.6K.VR
Supply voltage	3~400V/50Hz
Motor power [kW]	1,45
Current [A]	2,80
Revolutions [rpm]	1280
Minimum temperature [OC]	-15
Maximum temperature [OC]	+60
Compliance	ErP 2015, CE

## WDV-56-AC/4T

### DIMENSIONS



### CHARACTERISTICS:



$\varnothing d$ [mm]	A [mm]	B [mm]	C [mm]	H [mm]	Weight [kg]
408	782	710	1060	620	58,0

Motor type	RH56V-4DK.6N.VR
Supply voltage	3~400V/50Hz
Motor power [kW]	2,50
Current [A]	4,60
Revolutions [rpm]	1330
Minimum temperature [OC]	-15
Maximum temperature [OC]	+45
Compliance	ErP 2015, CE

## WDV-63-AC/4T

### DIMENSIONS



### CHARACTERISTICS:



Ød [mm]	A [mm]	B [mm]	C [mm]	H [mm]	Weight [kg]
454	872	800	1182	687	80,0

Motor type	RH63V-4DK.7Q.VR
Supply voltage	3~400V/50Hz
Motor power [kW]	3,90
Current [A]	6,60
Revolutions [rpm]	1270
Minimum temperature [OC]	-15
Maximum temperature [OC]	+55
Compliance	ErP 2015, CE