



## TERM Unit Heaters

TERM heating units with axial fans, metal casings and II and III rows heaters adapted for supplying with water of temperature up to 150/100°C or with steam under pressure up to 0,6 MPa are the most universal offer of the devices for heating such compartments as: production warehouses, workshops, storage warehouses, retail pavilions, show and sports halls etc. Heating-ventilating units are manufactured by adding to the heating TERM units TERM the roof or wall intakes and the intake boxes which enable to determine the proportion of mixing fresh and circulating air. Units are adapted to operate in horizontal position as the ceiling units as well as in vertical position as the wall units. In both positions the heaters construction ensures the opportunity of complete deaeration and dehydration. Regarding the air capacity TERM 0; 1; 2; units has the same capacity as the TROPIC heating units with the simultaneous increasing of achieved thermal power, thermal mediums and the opportunity for using them for heating and ventilating.

### PRODUCT DESCRIPTION

Series of types of units include 5 sizes. The unit consists of:

- axial fan;
- water heater (metal louvre or bimetal) or steam heater (bimetal);
- external casing;
- single-row inlet grid

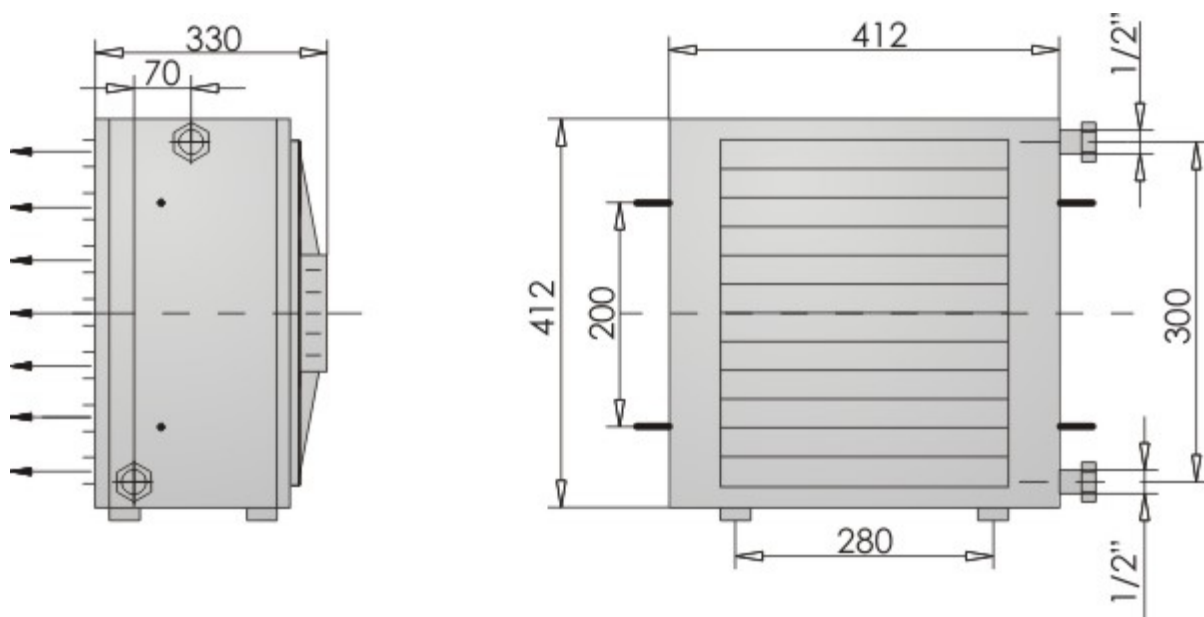
Fin water heaters are made of the copper pipes with internal diameter of 12mm and of aluminum fins with spacing  $s=2,4$  mm. Bimetal water heaters are made of steel pipes with external diameter  $d=16$  mm as well as of spirally rolled aluminum ribbing with external diameter of the element  $D=38$ mm and the ribs spacing  $s=2,8$ mm. Steam heaters are made of steel pipes with the external diameter  $d=25$ mm and spirally threaded aluminum ribbing with external diameter  $D=58$ mm and the ribs spacing 2,8mm or 5mm. Units with fin water heaters or bimetal heaters are with internal threads and units with steam heaters are with external threads. In the units which are intended to operate as the ceiling units the outlet grid can be replaced with the slot diffuser or with the exhaust nozzle. Slot diffuser enables heating people staying zone with secondary air stream. Exhaust nozzle enables the increase the range of the supply air stream. For mounting the units on the brackets at the wall or on the floor feet (TERM 0;1; 2;) or arms (TERM 3;4) located in the lower part of the casing are used. In order to undersling the units to the ceiling 4 screws located on the both sides of the casing (TERM 0; 1; 2) are used or blind rivets nuts which enable suspending with use of the threaded bars (TERM 3;4).

### WORKING CONDITIONS

Units with fin water heater can be supplied with water of temperature 150°C or lower and with the operational pressure up to 1,5MPa, and with bimetal water heater they can be supplied with water of temperature up to 150/70°C and with operational pressure up to 1,6 MPa. Units with steam heater (only wall mounted) can be supplied with steam under pressure of up to 0,6 Mpa. TERM 0;1 units fans are supplied only with single phase motors 230 V, 50 Hz. TERM 2 units fans are supplied with three phase motors 400 V, 50 Hz or with single phase motors 230V; 50Hz. TERM 3; 4 units fans are supplied only with the three-phase motors 400V; 50Hz. On buyer's request units TERM 1;2; 3; 4; can be equipped with the motors with the increased level of anti-explosive protection.

## Term-0-W-L-II

### DIMENSIONS



Fan specifications	
Voltage [V]	230
Motor power [kW]	0,055
Current [A]	0,40
Revolutions [rpm]	1300
IP	54
Insulation class	B
Operating temperature	to +40°C

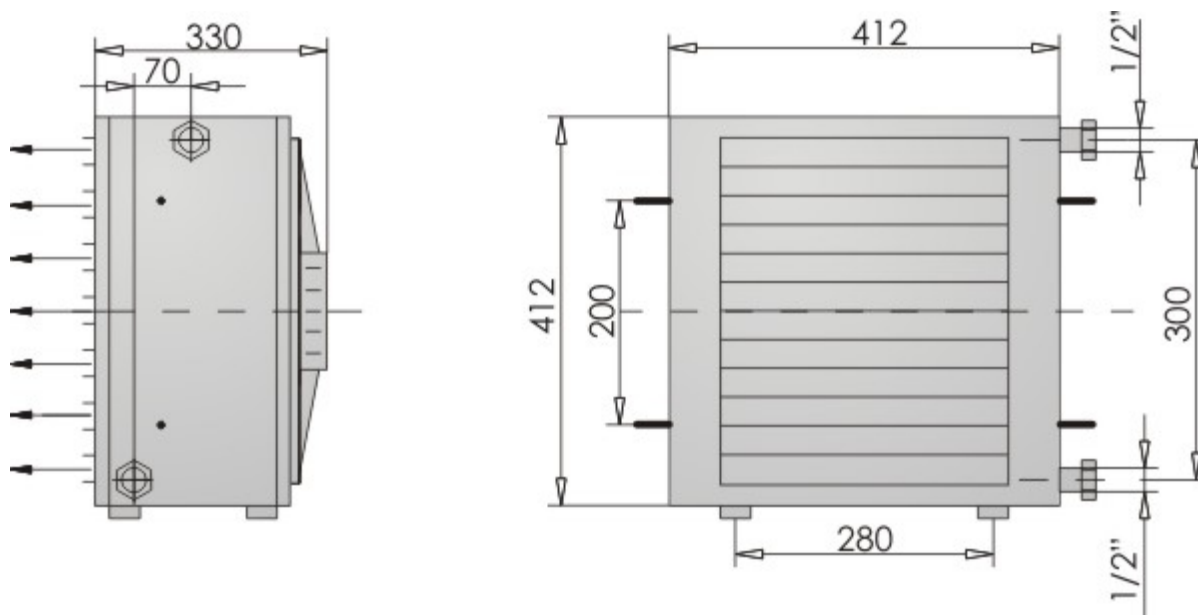
Thermal power of units with water heater				
Number of heater rows		II		
Air flow [m³/h]		1150		
Water capacity [dm³]		1,0		
Thermal power [kW], outflow air temperature [°C] and resistance of water flow [kPa]				
Water temp. [°C]	Inflow air temp. [°C]	kW	°C	kPa
110/80	-15	15,0	20	1,5
	0	12,5	31	1,2
	15	10,0	41	1,0

<b>90/70</b>	<b>-15</b>	13,6	17	2,9
	<b>0</b>	11,0	27	1,8
	<b>15</b>	8,4	37	1,1
<b>80/60</b>	<b>-15</b>	11,9	13	2,2
	<b>0</b>	9,3	23	1,6
	<b>15</b>	6,9	33	1,2
<b>70/50</b>	<b>-15</b>	10,3	9	1,6
	<b>0</b>	7,8	19	1,3
	<b>15</b>	5,4	29	1,1
<b>60/40</b>	<b>-15</b>	8,6	5	1,2
	<b>0</b>	6,2	15	1,1
	<b>15</b>	4,0	25	1,0

Operation noise level [dB(A)]	
At the distance of 1m	53
At the distance of 5m	48
Unit weight	
Weight [kg]	16

## Term-0-W-L-III

### DIMENSIONS



Fan specifications	
Voltage [V]	230
Motor power [kW]	0,055
Current [A]	0,40
Revolutions [rpm]	1300
IP	54
Insulation class	B
Operating temperature	to +40°C

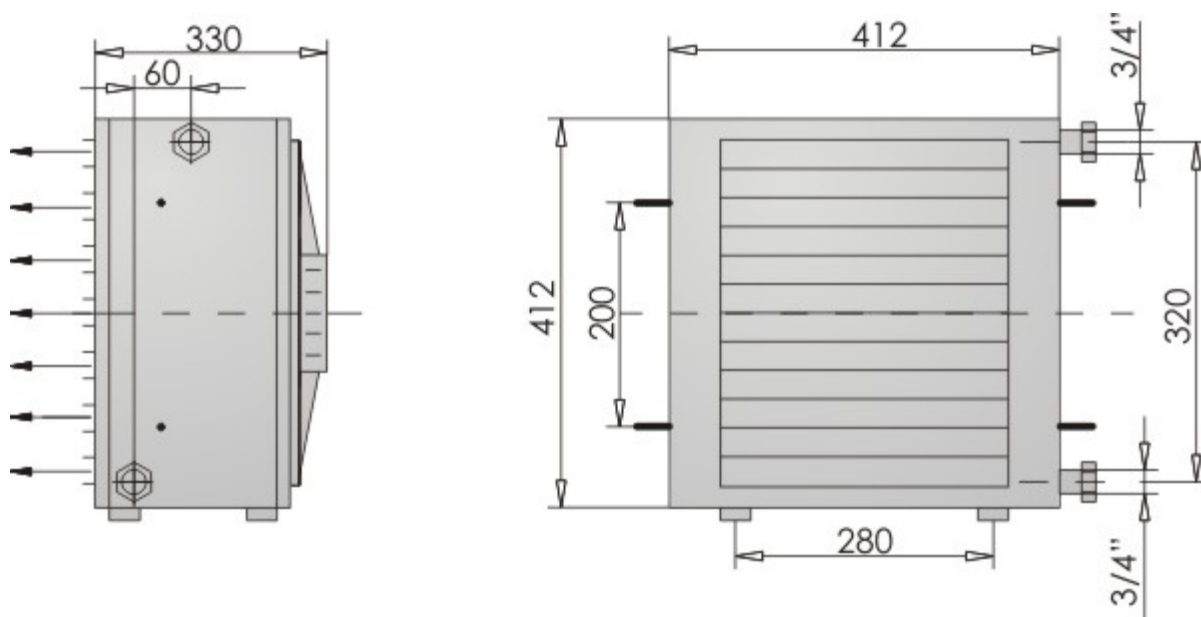
Thermal power of units with water heater				
Number of heater rows			III	
Air flow [m³/h]			1150	
Water capacity [dm³]			1,0	
Thermal power [kW], outflow air temperature [°C] and resistance of water flow [kPa]				
Water temp. [°C]	Inflow air temp. [°C]	kW	°C	kPa

<b>110/80</b>	<b>-15</b>	20,0	34	1,5
	<b>0</b>	16,5	43	1,1
	<b>15</b>	13,3	52	1,0
<b>90/70</b>	<b>-15</b>	18,0	29	2,6
	<b>0</b>	14,4	38	1,9
	<b>15</b>	11,1	46	1,4
<b>80/60</b>	<b>-15</b>	15,8	24	2,0
	<b>0</b>	12,4	32	1,5
	<b>15</b>	9,2	40	1,2
<b>70/50</b>	<b>-15</b>	13,2	19	1,5
	<b>0</b>	10,3	27	1,3
	<b>15</b>	7,2	35	1,1
<b>60/40</b>	<b>-15</b>	11,5	13	1,2
	<b>0</b>	8,3	22	1,1
	<b>15</b>	5,3	30	1,0

Operation noise level [dB(A)]	
At the distance of 1m	53
At the distance of 5m	48
Unit weight	
Weight [kg]	16

## Term-0-W-B-II

### DIMENSIONS



Fan specifications	
Voltage [V]	230
Motor power [kW]	0,055
Current [A]	0,40
Revolutions [rpm]	1300
IP	54
Insulation class	B
Operating temperature	to +40°C

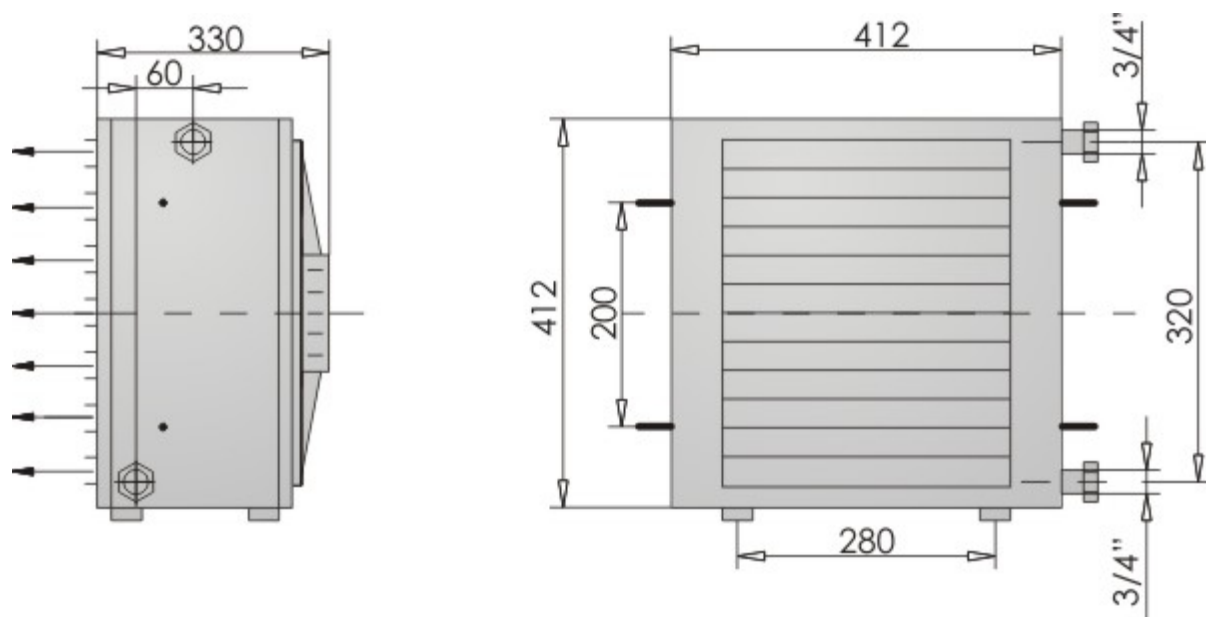
Thermal power of units with water heater				
Number of heater rows		II		
Air flow [m³/h]		1150		
Water capacity [dm³]		1,2		
Thermal power [kW], outflow air temperature [°C] and resistance of water flow [kPa]				
Water temp. [°C]	Inflow air temp. [°C]	kW	°C	kPa
80/60	-15	11,0	11	1,8
	0	8,7	22	1,3
	15	6,5	32	1,1

<b>90/70</b>	<b>-15</b>	12,5	15	2,2
	<b>0</b>	10,1	25	1,5
	<b>15</b>	7,9	36	1,2
<b>110/80</b>	<b>-15</b>	14,0	18	1,3
	<b>0</b>	11,6	29	1,1
	<b>15</b>	9,4	40	1,0
<b>130/90</b>	<b>-15</b>	15,4	22	1,1
	<b>0</b>	13,1	33	1,0
	<b>15</b>	10,9	44	1,0
<b>150/100</b>	<b>-15</b>	17,0	25	1,0
	<b>0</b>	14,6	37	1,0
	<b>15</b>	12,5	48	1,0

Operation noise level [dB(A)]	
At the distance of 1m	53
At the distance of 5m	48
Unit weight	
Weight [kg]	30

## Term-0-W-B-III

### DIMENSIONS



Fan specifications	
Voltage [V]	230
Motor power [kW]	0,055
Current [A]	0,40
Revolutions [rpm]	1300
IP	54
Insulation class	B
Operating temperature	to +40°C

Thermal power of units with water heater				
Number of heater rows		III		
Air flow [m³/h]		1100		
Water capacity [dm³]		1,7		
Thermal power [kW], outflow air temperature [°C] and resistance of water flow [kPa]				
Water temp. [°C]	Inflow air temp. [°C]	kW	°C	kPa

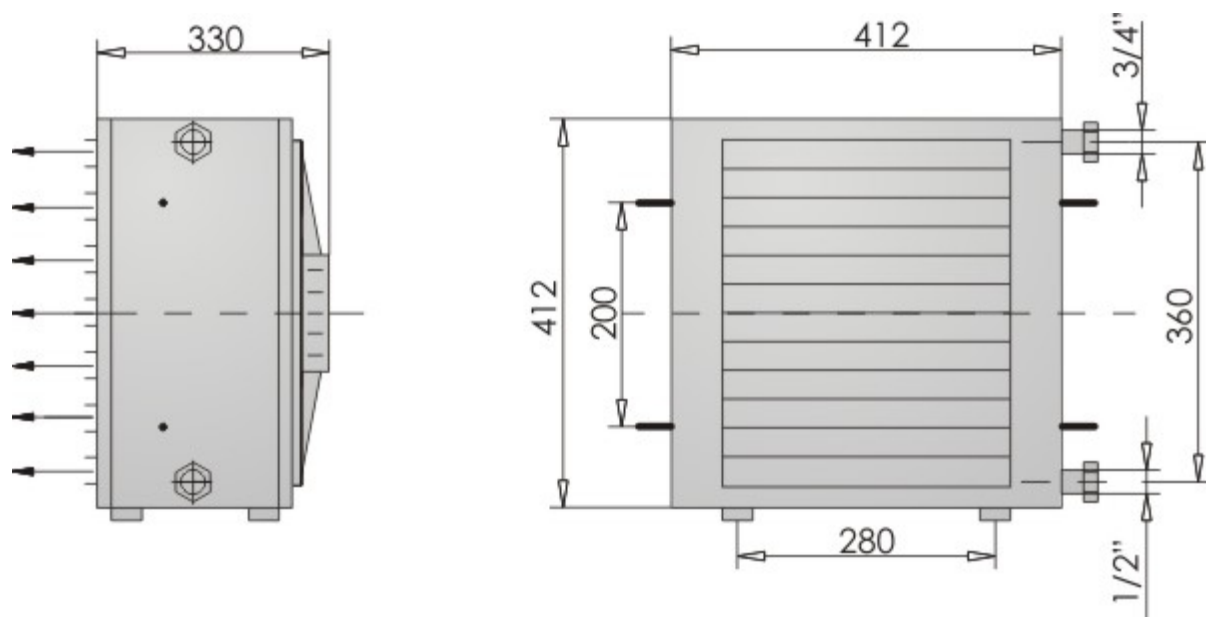


<b>80/60</b>	<b>-15</b>	13,8	19	1,2
	<b>0</b>	10,9	28	1,1
	<b>15</b>	8,2	37	1,0
<b>90/70</b>	<b>-15</b>	15,7	24	1,5
	<b>0</b>	12,7	33	1,3
	<b>15</b>	9,9	42	1,1
<b>110/80</b>	<b>-15</b>	17,5	28	1,2
	<b>0</b>	14,6	38	1,0
	<b>15</b>	11,8	48	1,0
<b>130/90</b>	<b>-15</b>	19,5	33	1,1
	<b>0</b>	16,5	43	1,0
	<b>15</b>	13,8	53	1,0
<b>150/100</b>	<b>-15</b>	21,3	38	1,0
	<b>0</b>	18,5	48	1,0
	<b>15</b>	15,7	59	1,0

Operation noise level [dB(A)]	
At the distance of 1m	53
At the distance of 5m	48
Unit weight	
Weight [kg]	30

## Term-0-P-B-2,8

### DIMENSIONS



Fan specifications	
Voltage [V]	230
Motor power [kW]	0,055
Current [A]	0,40
Revolutions [rpm]	1300
IP	54
Insulation class	B
Operating temperature	to +40°C

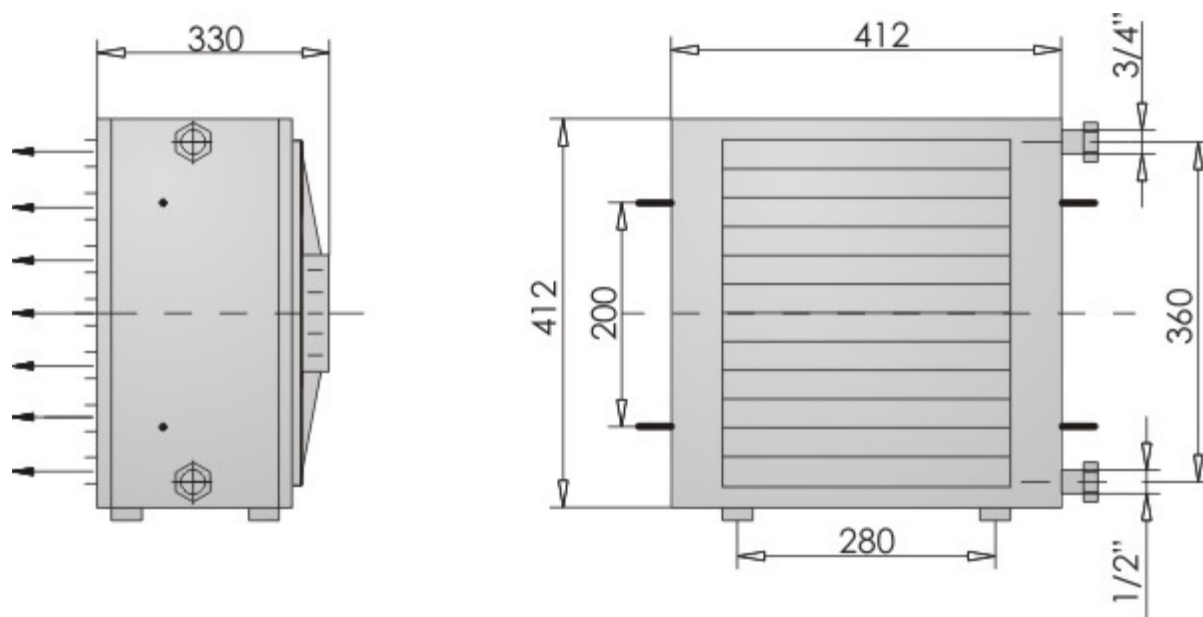
Thermal power of units with steam heater				
Ribs spacing [mm]			2,8	
Air flow [m³/h]			1100	
Thermal power [kW], outflow air temperature [°C] and quantity of steam [kg/h]				
Steam pressure [MPa]	Inflow air temp. [°C]	kW	°C	kg/h
0,05	-15	22,7	39	47
	0	19,6	49	41
	15	16,7	59	35

<b>0,1</b>	<b>-15</b>	24,3	43	51
	<b>0</b>	21,3	54	44
	<b>15</b>	18,3	64	38
<b>0,2</b>	<b>-15</b>	26,7	48	56
	<b>0</b>	23,6	59	49
	<b>15</b>	20,6	70	43
<b>0,4</b>	<b>-15</b>	30,2	57	63
	<b>0</b>	27,0	68	57
	<b>15</b>	23,9	79	50
<b>0,6</b>	<b>-15</b>	32,5	62	68
	<b>0</b>	29,3	74	62
	<b>15</b>	26,2	85	55

Operation noise level [dB(A)]	
At the distance of 1m	53
At the distance of 5m	48
Unit weight	
Weight [kg]	35

## Term-0-P-B-5,0

### DIMENSIONS



Fan specifications	
Voltage [V]	230
Motor power [kW]	0,055
Current [A]	0,40
Revolutions [rpm]	1300
IP	54
Insulation class	B
Operating temperature	to +40°C

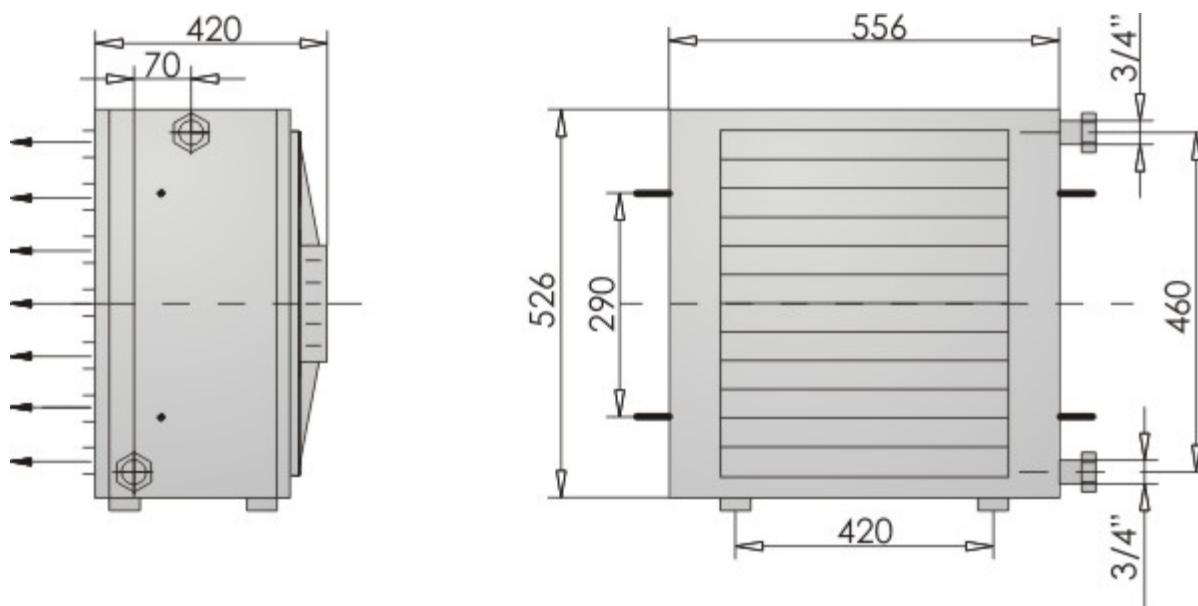
Thermal power of units with steam heater				
Ribs spacing [mm]		5,0		
Air flow [m³/h]		1100		
Thermal power [kW], outflow air temperature [°C] and quantity of steam [kg/h]				
Steam pressure [MPa]	Inflow air temp. [°C]	kW	°C	kg/h
0,05	-15	14,6	19	30
	0	12,7	32	26
	15	10,9	44	23
0,1	-15	15,6	22	33
	0	13,7	34	29
	15	11,9	46	25

<b>0,2</b>	<b>-15</b>	17,1	26	36
	<b>0</b>	15,2	38	32
	<b>15</b>	13,4	50	28
<b>0,4</b>	<b>-15</b>	19,4	31	40
	<b>0</b>	17,4	44	36
	<b>15</b>	15,6	56	32
<b>0,6</b>	<b>-15</b>	20,9	34	44
	<b>0</b>	18,9	48	3,9
	<b>15</b>	17,0	60	3,6

<b>Operation noise level [dB(A)]</b>	
<b>At the distance of 1m</b>	53
<b>At the distance of 5m</b>	48
<b>Unit weight</b>	
<b>Weight [kg]</b>	35

## Term-1-W-L-II

### DIMENSIONS



Fan specifications	
Voltage [V]	230
Motor power [kW]	0,2
Current [A]	0,9
Revolutions [rpm]	1400
IP	54
Insulation class	F
Operating temperature	to +60°C

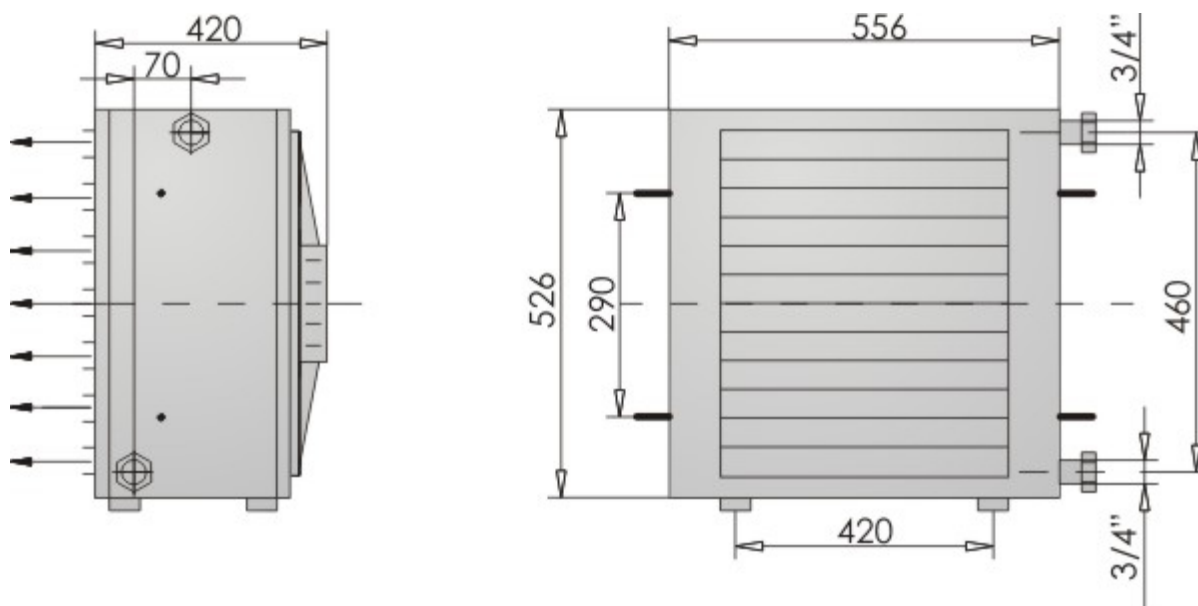
Thermal power of units with water heater				
Number of heater rows		II		
Air flow [m³/h]		2700		
Water capacity [dm³]		1,5		
Thermal power [kW], outflow air temperature [°C] and resistance of water flow [kPa]				
Water temp. [°C]	Inflow air temp. [°C]	kW	°C	kPa
110/80	-15	41,0	24	12,0
	0	34,1	35	8,4
	15	27,4	44	5,5

<b>90/70</b>	<b>-15</b>	38,0	21	23,0
	<b>0</b>	30,5	31	15,0
	<b>15</b>	23,6	40	9,1
<b>80/60</b>	<b>-15</b>	33,3	17	18,2
	<b>0</b>	26,1	26	11,0
	<b>15</b>	19,3	36	6,0
<b>70/50</b>	<b>-15</b>	28,7	13	13,0
	<b>0</b>	21,7	22	7,7
	<b>15</b>	15,2	31	3,8
<b>60/40</b>	<b>-15</b>	24,2	9	9,0
	<b>0</b>	17,2	18	5,1
	<b>15</b>	11,2	27	2,1

Operation noise level [dB(A)]	
At the distance of 1m	53
At the distance of 5m	48
Unit weight	
Weight [kg]	26

## Term-1-W-L-III

### DIMENSIONS



Fan specifications	
Voltage [V]	230
Motor power [kW]	0,2
Current [A]	0,9
Revolutions [rpm]	1400
IP	54
Insulation class	F
Operating temperature	to +60°C

Thermal power of units with water heater				
Number of heater rows		III		
Air flow [m³/h]		2600		
Water capacity [dm³]		2,0		
Thermal power [kW], outflow air temperature [°C] and resistance of water flow [kPa]				
Water temp. [°C]	Inflow air temp. [°C]	kW	°C	kPa
110/80	-15	54,6	40	11,0
	0	45,2	48	8,0
	15	36,4	56	5,2

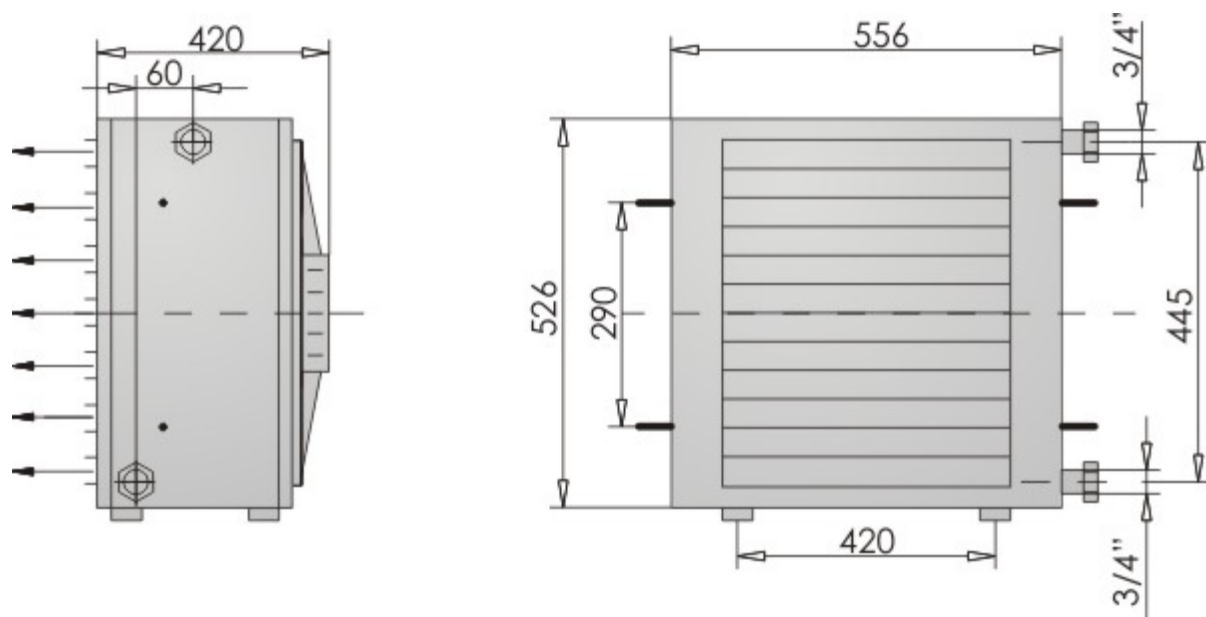


<b>90/70</b>	<b>-15</b>	48,9	34	21,1
	<b>0</b>	39,4	42	13,6
	<b>15</b>	34,0	49	8,1
<b>80/60</b>	<b>-15</b>	43,1	28	16,3
	<b>0</b>	33,8	36	10,0
	<b>15</b>	25,1	43	5,5
<b>70/50</b>	<b>-15</b>	37,3	22	12,2
	<b>0</b>	28,3	30	7,0
	<b>15</b>	19,9	37	3,4
<b>60/40</b>	<b>-15</b>	31,6	17	8,8
	<b>0</b>	22,9	24	4,6
	<b>15</b>	14,8	31	1,9

Operation noise level [dB(A)]	
At the distance of 1m	60,5
At the distance of 5m	54
Unit weight	
Weight [kg]	26

## Term-1-W-B-II

### DIMENSIONS



Fan specifications	
Voltage [V]	230
Motor power [kW]	0,2
Current [A]	0,9
Revolutions [rpm]	1400
IP	54
Insulation class	F
Operating temperature	to +60°C

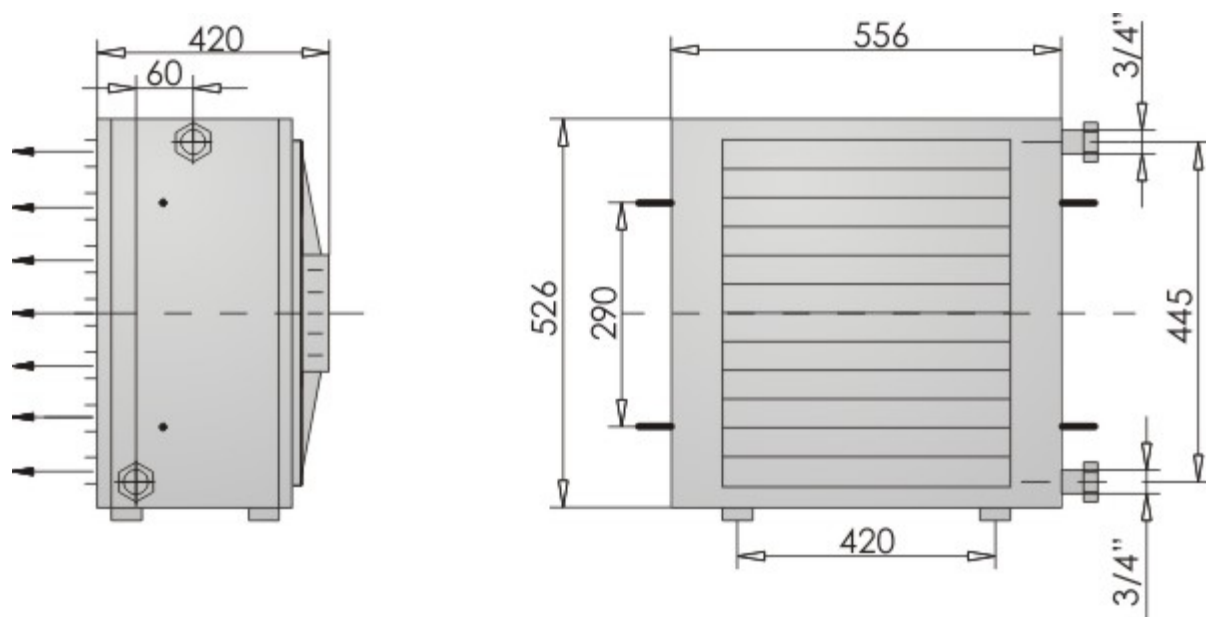
Thermal power of units with water heater				
Number of heater rows		II		
Air flow [m³/h]		2700		
Water capacity [dm³]		1,8		
Thermal power [kW], outflow air temperature [°C] and resistance of water flow [kPa]				
Water temp. [°C]	Inflow air temp. [°C]	kW	°C	kPa
80/60	-15	23,6	8	11,0
	0	18,6	19	7,0
	15	13,9	30	3,9

<b>90/70</b>	<b>-15</b>	26,9	11	14,0
	<b>0</b>	21,7	22	9,6
	<b>15</b>	16,9	33	5,8
<b>110/80</b>	<b>-15</b>	29,8	14	7,0
	<b>0</b>	24,8	25	5,5
	<b>15</b>	20,1	36	3,6
<b>130/90</b>	<b>-15</b>	32,9	17	5,5
	<b>0</b>	28,0	28	4,0
	<b>15</b>	23,4	40	2,7
<b>150/100</b>	<b>-15</b>	8,6	5	1,2
	<b>0</b>	6,2	15	1,1
	<b>15</b>	4,0	25	1,0

Operation noise level [dB(A)]	
At the distance of 1m	60,5
At the distance of 5m	54
Unit weight	
Weight [kg]	38

## Term-1-W-B-III

### DIMENSIONS



Fan specifications	
Voltage [V]	230
Motor power [kW]	0,2
Current [A]	0,9
Revolutions [rpm]	1400
IP	54
Insulation class	F
Operating temperature	to +60°C

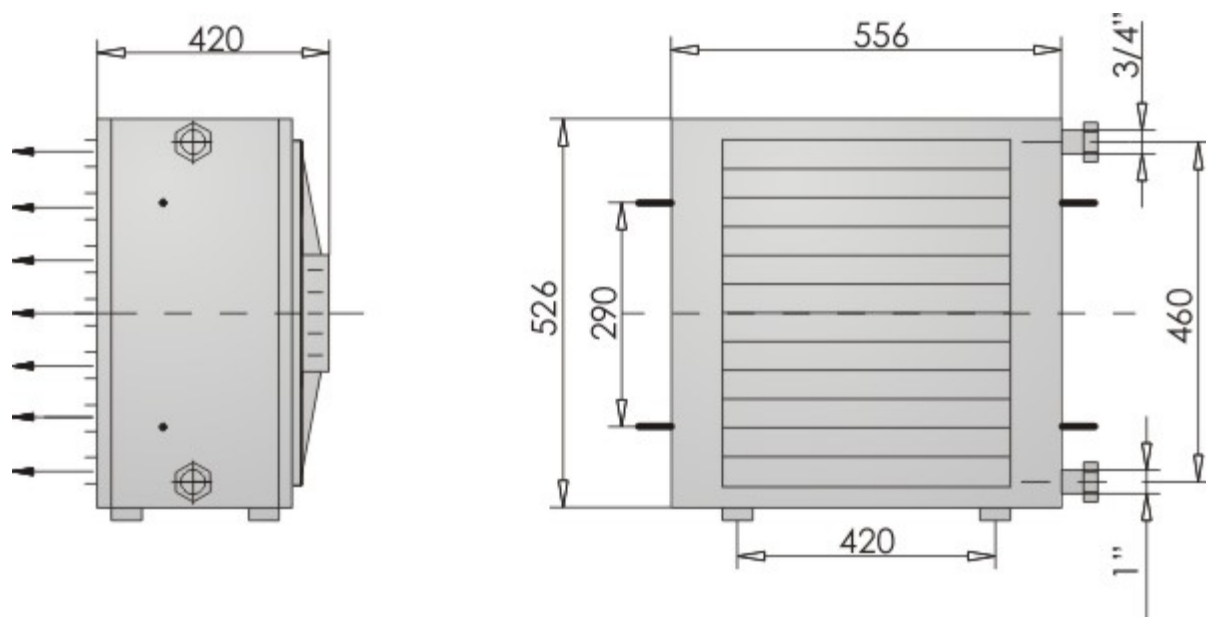
Thermal power of units with water heater				
Number of heater rows		III		
Air flow [m³/h]		2600		
Water capacity [dm³]		2,0		
Thermal power [kW], outflow air temperature [°C] and resistance of water flow [kPa]				
Water temp. [°C]	Inflow air temp. [°C]	kW	°C	kPa
110/80	-15	54,6	40	11,0
	0	45,2	48	8,0
	15	36,4	56	5,2

<b>90/70</b>	<b>-15</b>	48,9	34	21,1
	<b>0</b>	39,4	42	13,6
	<b>15</b>	34,0	49	8,1
<b>80/60</b>	<b>-15</b>	43,1	28	16,3
	<b>0</b>	33,8	36	10,0
	<b>15</b>	25,1	43	5,5
<b>70/50</b>	<b>-15</b>	37,3	22	12,2
	<b>0</b>	28,3	30	7,0
	<b>15</b>	19,9	37	3,4
<b>60/40</b>	<b>-15</b>	31,6	17	8,8
	<b>0</b>	22,9	24	4,6
	<b>15</b>	14,8	31	1,9

Operation noise level [dB(A)]	
At the distance of 1m	60,5
At the distance of 5m	54
Unit weight	
Weight [kg]	26

## Term-1-P-B-2,8

### DIMENSIONS



Fan specifications	
Voltage [V]	230
Motor power [kW]	0,2
Current [A]	0,9
Revolutions [rpm]	1400
IP	54
Insulation class	F
Operating temperature	to +60°C

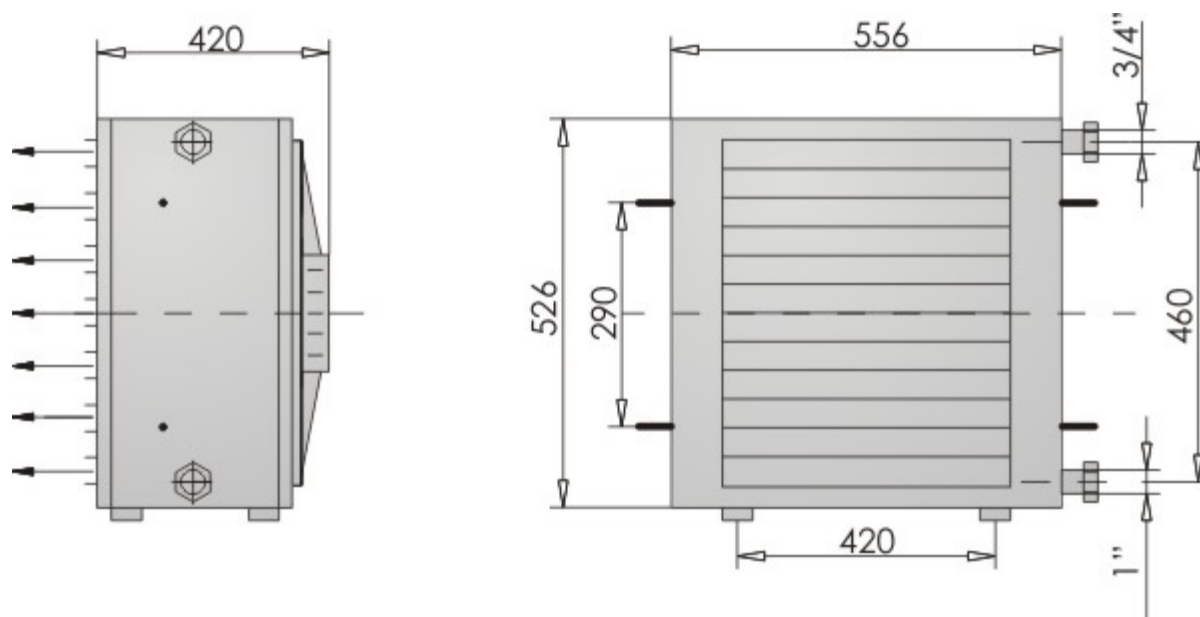
Thermal power of units with steam heater				
Ribs spacing [mm]			2,8	
Air flow [m³/h]			2700	
Thermal power [kW], outflow air temperature [°C] and quantity of steam [kg/h]				
Steam pressure [MPa]	Inflow air temp. [°C]	kW	°C	kg/h
0,05	-15	50,6	34	106
	0	43,9	45	92
	15	37,4	55	78

<b>0,1</b>	<b>-15</b>	54,3	37	114
	<b>0</b>	47,5	49	100
	<b>15</b>	40,9	59	86
<b>0,2</b>	<b>-15</b>	59,5	42	125
	<b>0</b>	52,7	54	110
	<b>15</b>	46,1	65	96
<b>0,4</b>	<b>-15</b>	67,2	50	141
	<b>0</b>	60,3	62	126
	<b>15</b>	53,5	73	112
<b>0,6</b>	<b>-15</b>	72,5	55	152
	<b>0</b>	65,5	67	137
	<b>+15</b>	58,7	78	123

Operation noise level [dB(A)]	
At the distance of 1m	60,5
At the distance of 5m	54
Unit weight	
Weight [kg]	45

## Term-1-P-B-5,0

### DIMENSIONS



Fan specifications	
Voltage [V]	230
Motor power [kW]	0,2
Current [A]	0,9
Revolutions [rpm]	1400
IP	54
Insulation class	F
Operating temperature	to +60°C

Thermal power of units with steam heater				
Ribs spacing [mm]			5,0	
Air flow [m³/h]			2700	
Thermal power [kW], outflow air temperature [°C] and quantity of steam [kg/h]				
Steam pressure [MPa]	Inflow air temp. [°C]	kW	°C	kg/h
0,05	-15	32,8	17	70
	0	28,6	29	60
	15	24,5	41	51

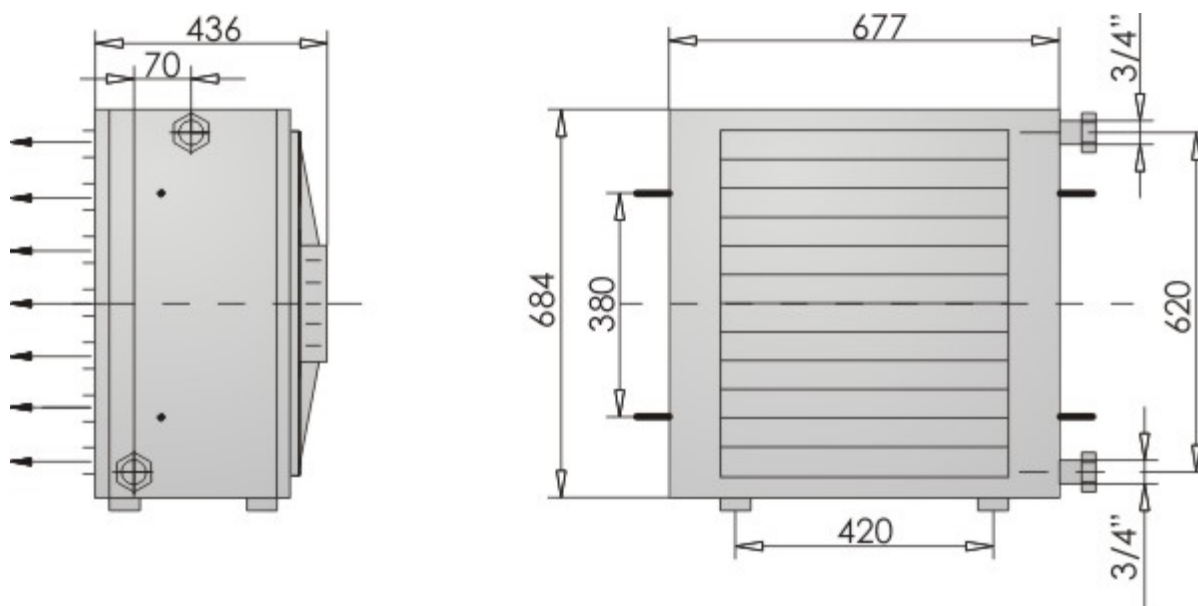


<b>0,1</b>	<b>-15</b>	36,2	19	74
	<b>0</b>	31,0	32	65
	<b>15</b>	26,9	44	56
<b>0,2</b>	<b>-15</b>	38,6	22	81
	<b>0</b>	34,4	35	72
	<b>15</b>	30,2	48	63
<b>0,4</b>	<b>-15</b>	43,7	27	91
	<b>0</b>	39,3	40	82
	<b>15</b>	35,1	53	74
<b>0,6</b>	<b>-15</b>	47,1	30	98
	<b>0</b>	42,7	44	89
	<b>15</b>	38,5	57	81

Operation noise level [dB(A)]	
At the distance of 1m	60,5
At the distance of 5m	54
Unit weight	
Weight [kg]	26

## Term-2-W-L-II

### DIMENSIONS



Fan specifications		
Voltage [V]	230	400
Motor power [kW]	0,61	0,61
Current [A]	2,8	1,15
Revolutions [rpm]	1310	1340
IP	54	54
Insulation class	F	F
Operating temperature	to +60°C	to +70°C

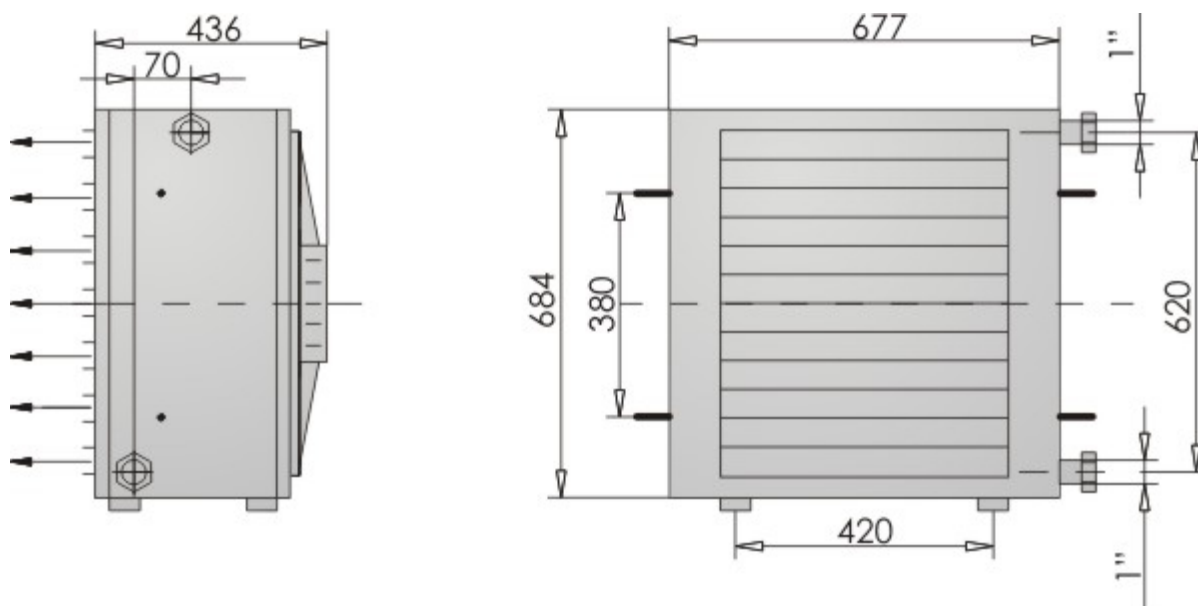
Thermal power of units with water heater				
Number of heater rows		II		
Air flow [m³/h]		6200		
Water capacity [dm³]		2,4		
Thermal power [kW], outflow air temperature [°C] and resistance of water flow [kPa]				
Water temp. [°C]	Inflow air temp. [°C]	kW	°C	kPa
110/80	-15	83,1	24	19,5
	0	68,9	34	13,0
	15	55,4	44	8,8

<b>90/70</b>	<b>-15</b>	76,4	21	40,0
	<b>0</b>	61,4	31	30,6
	<b>15</b>	47,2	40	19,0
<b>80/60</b>	<b>-15</b>	67,0	17	37,3
	<b>0</b>	52,5	26	21,7
	<b>15</b>	38,7	36	12,2
<b>70/50</b>	<b>-15</b>	57,8	13	27,4
	<b>0</b>	43,7	22	14,3
	<b>15</b>	30,5	31	6,8
<b>60/40</b>	<b>-15</b>	48,7	8	19,0
	<b>0</b>	35,1	18	10,2
	<b>15</b>	22,4	27	4,1

Operation noise level [dB(A)]	
At the distance of 1m	65
At the distance of 5m	57,5
Unit weight	
Weight [kg]	46

## Term-2-W-L-III

### DIMENSIONS



Fan specifications		
Voltage [V]	230	400
Motor power [kW]	0,61	0,61
Current [A]	2,8	1,15
Revolutions [rpm]	1310	1340
IP	54	54
Insulation class	F	F
Operating temperature	to +60°C	to +70°C

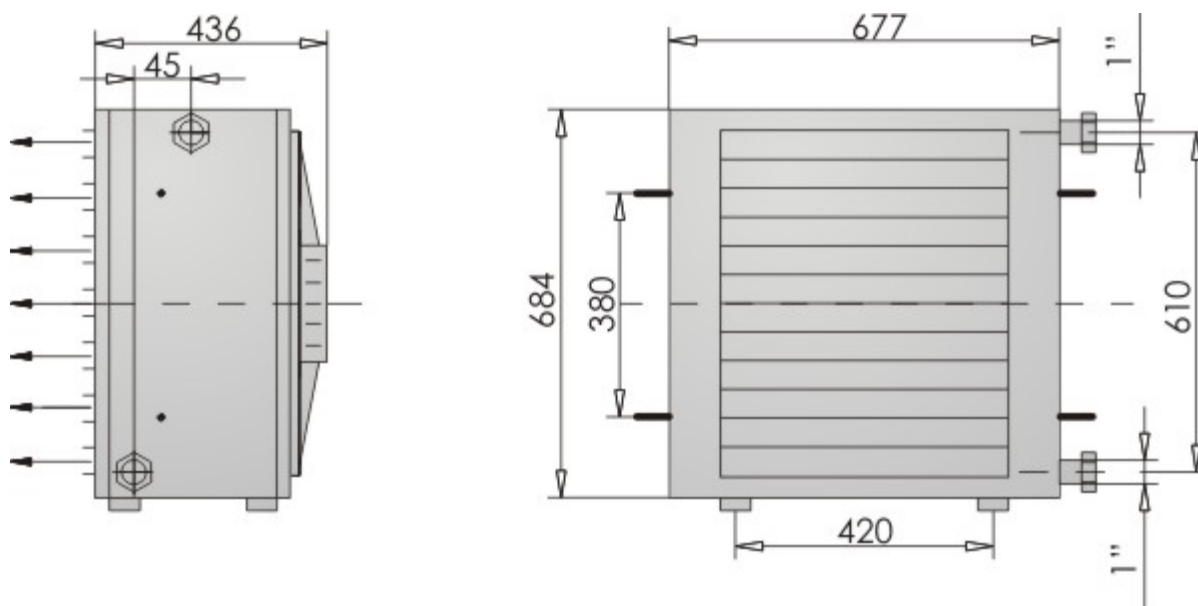
Thermal power of units with water heater				
Number of heater rows		III		
Air flow [m³/h]		6000		
Water capacity [dm³]		3,2		
Thermal power [kW], outflow air temperature [°C] and resistance of water flow [kPa]				
Water temp. [°C]	Inflow air temp. [°C]	kW	°C	kPa
110/80	-15	108,3	39	19,0
	0	89,7	48	13,5
	15	72,2	56	8,7

<b>90/70</b>	<b>-15</b>	97,8	34	33,9
	<b>0</b>	78,6	41	21,7
	<b>15</b>	60,5	49	14,3
<b>80/60</b>	<b>-15</b>	86,1	28	27,4
	<b>0</b>	67,4	35	16,6
	<b>15</b>	49,9	43	8,4
<b>70/50</b>	<b>-15</b>	74,5	22	19,0
	<b>0</b>	56,4	30	10,3
	<b>15</b>	39,5	37	5,4
<b>60/40</b>	<b>-15</b>	63,1	16	14,3
	<b>0</b>	45,6	24	6,8
	<b>15</b>	29,4	31	3,0

Operation noise level [dB(A)]	
At the distance of 1m	65
At the distance of 5m	57,5
Unit weight	
Weight [kg]	46

## Term-2-W-B-II

### DIMENSIONS



Fan specifications		
Voltage [V]	230	400
Motor power [kW]	0,61	0,61
Current [A]	2,8	1,15
Revolutions [rpm]	1310	1340
IP	54	54
Insulation class	F	F
Operating temperature	to +60°C	to +70°C

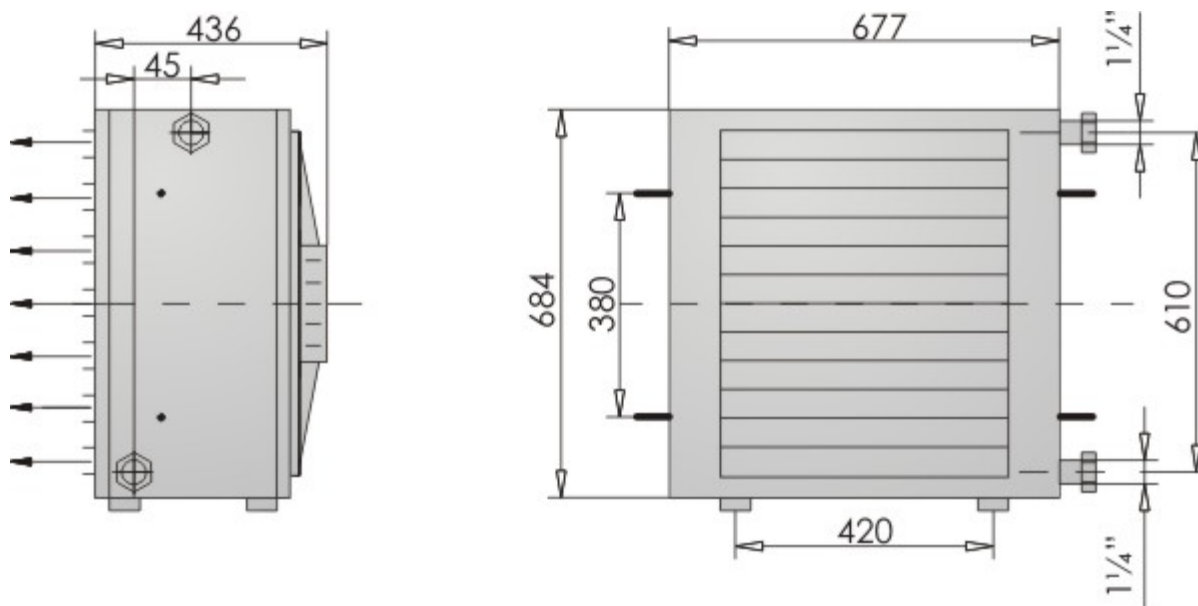
Thermal power of units with water heater				
Number of heater rows		II		
Air flow [m³/h]		6200		
Water capacity [dm³]		3,7		
Thermal power [kW], outflow air temperature [°C] and resistance of water flow [kPa]				
Water temp. [°C]	Inflow air temp. [°C]	kW	°C	kPa
80/60	-15	52,9	10	16,5
	0	41,7	21	10,3
	15	31,2	31	5,7

<b>90/70</b>	<b>-15</b>	60,3	13	19,1
	<b>0</b>	48,8	24	14,0
	<b>15</b>	37,9	35	8,4
<b>110/80</b>	<b>-15</b>	66,8	16	11,7
	<b>0</b>	55,7	28	8,1
	<b>15</b>	45,1	39	5,4
<b>130/90</b>	<b>-15</b>	73,9	20	8,0
	<b>0</b>	63,0	31	5,8
	<b>15</b>	52,5	43	4,0
<b>150/100</b>	<b>-15</b>	81,2	23	6,2
	<b>0</b>	70,3	35	4,6
	<b>15</b>	59,9	47	3,4

Operation noise level [dB(A)]	
At the distance of 1m	65
At the distance of 5m	57,5
Unit weight	
Weight [kg]	84

## Term-2-W-B-III

### DIMENSIONS



Fan specifications		
Voltage [V]	230	400
Motor power [kW]	0,61	0,61
Current [A]	2,8	1,15
Revolutions [rpm]	1310	1340
IP	54	54
Insulation class	F	F
Operating temperature	do +60°C	do +70°C

Thermal power of units with water heater				
Number of heater rows		III		
Air flow [m³/h]		6000		
Water capacity [dm³]		5,6		
Thermal power [kW], outflow air temperature [°C] and resistance of water flow [kPa]				
Water temp. [°C]	Inflow air temp. [°C]	kW	°C	kPa
80/60	-15	70,1	20	12,9
	0	55,3	29	8,0
	15	41,4	38	4,5

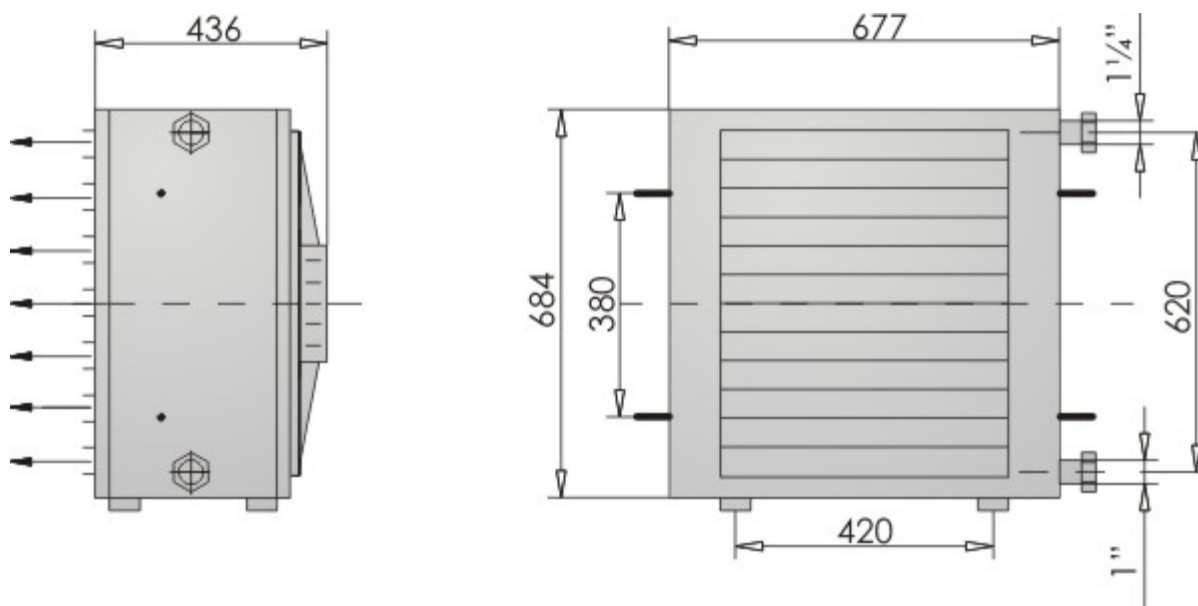


<b>90/70</b>	<b>-15</b>	79,6	25	16,6
	<b>0</b>	64,4	34	10,8
	<b>15</b>	51,0	43	6,6
<b>110/80</b>	<b>-15</b>	88,9	29	9,2
	<b>0</b>	74,0	39	6,4
	<b>15</b>	59,9	49	4,2
<b>130/90</b>	<b>-15</b>	98,6	35	6,4
	<b>0</b>	83,9	45	4,6
	<b>15</b>	69,9	54	3,0
<b>150/100</b>	<b>-15</b>	108,6	39	4,9
	<b>0</b>	94,0	50	3,7
	<b>15</b>	80,0	60	2,7

Operation noise level [dB(A)]	
At the distance of 1m	65
At the distance of 5m	57,5
Unit weight	
Weight [kg]	84

## Term-2-P-B-2,8

### DIMENSIONS



Fan specifications		
Voltage [V]	230	400
Motor power [kW]	0,61	0,61
Current [A]	2,8	1,15
Revolutions [rpm]	1310	1340
IP	54	54
Insulation class	F	F
Operating temperature	to +60°C	to +70°C

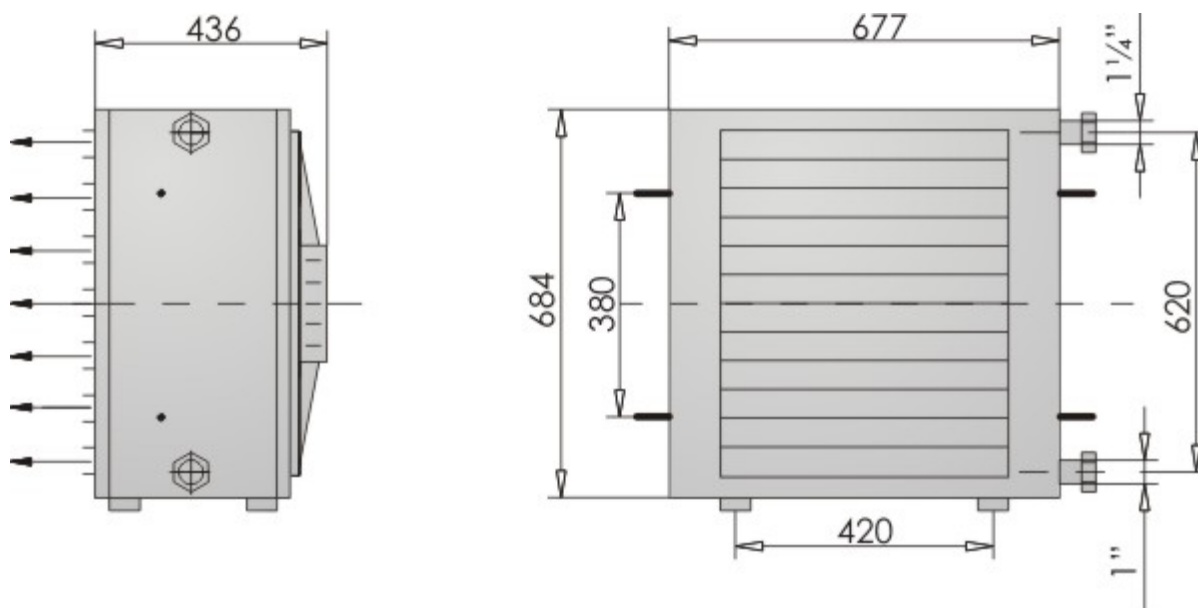
Thermal power of units with steam heater				
Ribs spacing [mm]			2,8	
Air flow [m³/h]			6200	
Thermal power [kW], outflow air temperature [°C] and quantity of steam [kg/h]				
Steam pressure [MPa]	Inflow air temp. [°C]	kW	°C	kg/h
0,05	-15	94,3	30	198
	0	81,0	41	172
	15	69,8	52	143
0,1	-15	101,0	33	212
	0	88,6	45	186
	15	76,4	56	160

<b>0,2</b>	<b>-15</b>	110,9	38	232
	<b>0</b>	98,2	50	206
	<b>15</b>	86,0	61	180
<b>0,4</b>	<b>-15</b>	125,2	45	263
	<b>0</b>	112,4	57	236
	<b>15</b>	100,0	68	210
<b>0,6</b>	<b>-15</b>	136,0	49	283
	<b>0</b>	122,1	62	256
	<b>15</b>	109,5	73	230

<b>Operation noise level [dB(A)]</b>	
<b>At the distance of 1m</b>	65
<b>At the distance of 5m</b>	57,5
<b>Unit weight</b>	
<b>Weight [kg]</b>	72

## Term-2-P-B-5,0

### DIMENSIONS



Fan specifications		
Voltage [V]	230	400
Motor power [kW]	0,61	0,61
Current [A]	2,8	1,15
Revolutions [rpm]	1310	1340
IP	54	54
Insulation class	F	F
Operating temperature	to +60°C	to +70°C

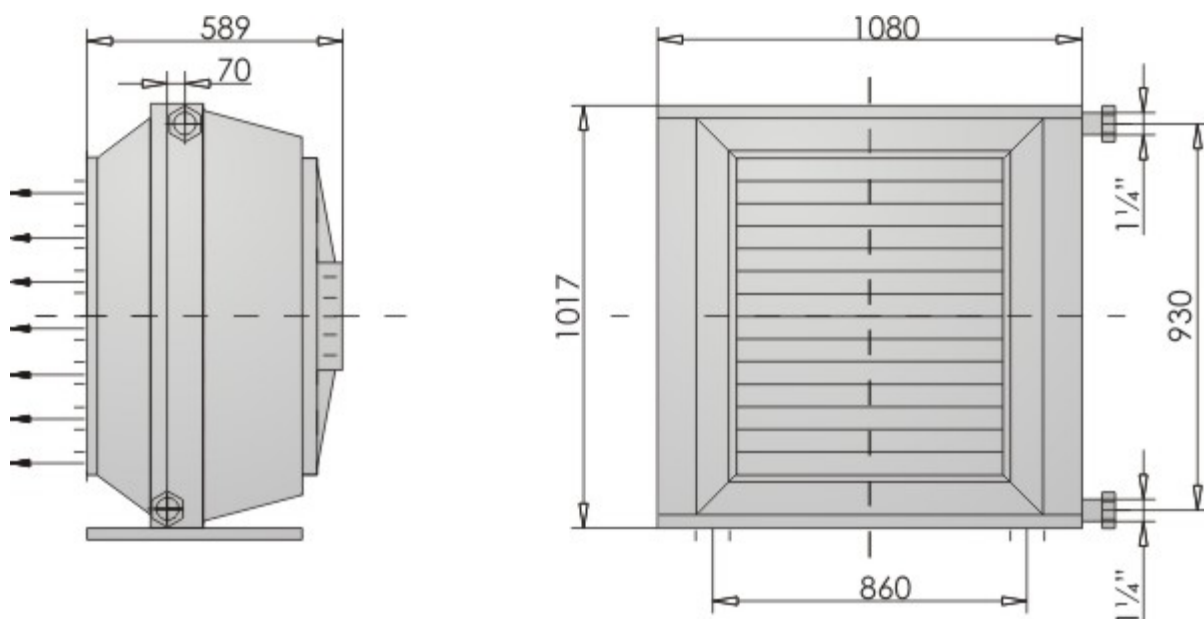
Thermal power of units with steam heater				
Ribs spacing [mm]			5,0	
Air flow [m³/h]			6200	
Thermal power [kW], outflow air temperature [°C] and quantity of steam [kg/h]				
Steam pressure [MPa]	Inflow air temp. [°C]	kW	°C	kg/h
0,05	-15	60,3	13	126
	0	52,6	26	110
	15	45,1	39	94
0,1	-15	64,7	16	135
	0	57,0	29	120
	15	49,4	41	103

<b>0,2</b>	<b>-15</b>	70,9	19	149
	<b>0</b>	63,2	32	132
	<b>15</b>	55,6	44	116
<b>0,4</b>	<b>-15</b>	81,0	23	168
	<b>0</b>	72,3	36	152
	<b>15</b>	64,6	49	135
<b>0,6</b>	<b>-15</b>	86,4	26	181
	<b>0</b>	78,5	40	165
	<b>15</b>	70,8	53	148

<b>Operation noise level [dB(A)]</b>	
<b>At the distance of 1m</b>	65
<b>At the distance of 5m</b>	57,5
<b>Unit weight</b>	
<b>Weight [kg]</b>	72

## Term-3-W-L-II

### DIMENSIONS



Fan specifications	
Voltage [V]	400
Motor power [kW]	1,2
Current [A]	2,4
Revolutions [rpm]	1330
IP	54
Insulation class	F
Operating temperature	to +50°C

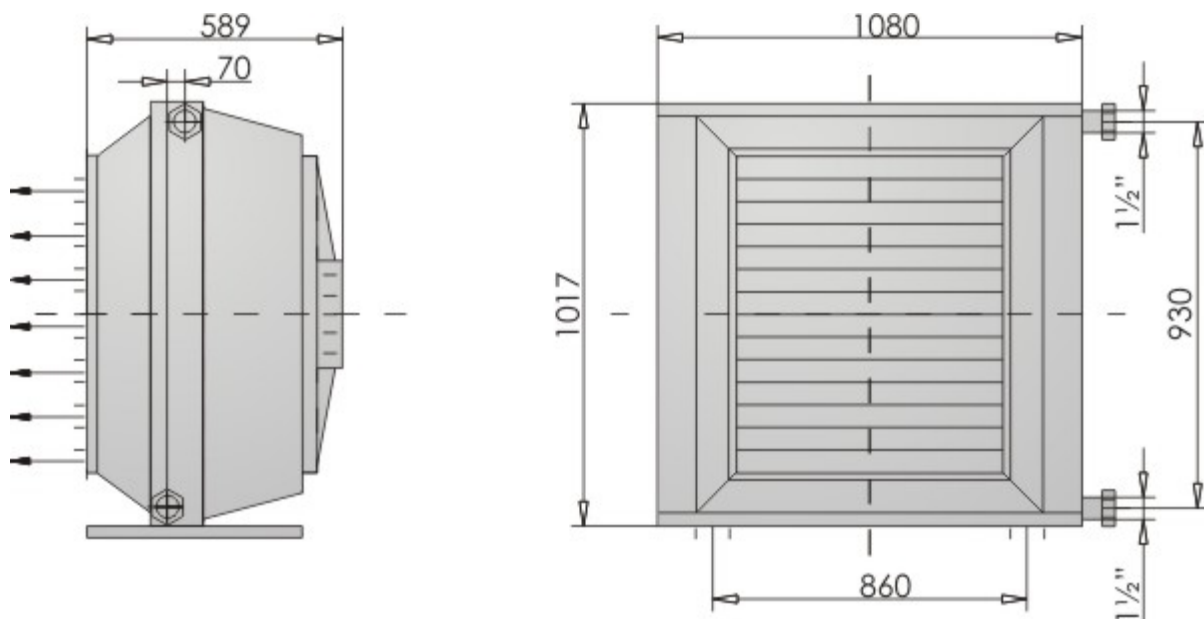
Thermal power of units with water heater				
Number of heater rows		II		
Air flow [m³/h]		10850		
Water capacity [dm³]		4,8		
Thermal power [kW], outflow air temperature [°C] and resistance of water flow [kPa]				
Water temp. [°C]	Inflow air temp. [°C]	kW	°C	kPa
110/80	-15	170,8	26	15,0
	0	141,5	36	10,9
	15	113,8	45	6,3

<b>90/70</b>	<b>-15</b>	157,8	23	17,2
	<b>0</b>	127,0	32	11,3
	<b>15</b>	97,6	41	6,7
<b>80/60</b>	<b>-15</b>	138,4	18	13,1
	<b>0</b>	108,5	27	8,1
	<b>15</b>	80,1	37	4,3
<b>70/50</b>	<b>-15</b>	119,5	14	9,6
	<b>0</b>	90,4	23	6,0
	<b>15</b>	63,1	32	2,9
<b>60/40</b>	<b>-15</b>	100,8	9	6,7
	<b>0</b>	72,7	18	3,2
	<b>15</b>	46,5	27	1,7

Operation noise level [dB(A)]	
At the distance of 1m	76
At the distance of 5m	66,5
Unit weight	
Weight [kg]	105

## Term-3-W-L-III

### DIMENSIONS



Fan specifications	
Voltage [V]	400
Motor power [kW]	1,2
Current [A]	2,4
Revolutions [rpm]	1330
IP	54
Insulation class	F
Operating temperature	to +50°C

Thermal power of units with water heater				
Number of heater rows		III		
Air flow [m³/h]		10500		
Water capacity [dm³]		7,5		
Thermal power [kW], outflow air temperature [°C] and resistance of water flow [kPa]				
Water temp. [°C]	Inflow air temp. [°C]	kW	°C	kPa
110/80	-15	224,0	41	12,0
	0	186,0	49	7,9
	15	149,8	57	4,9

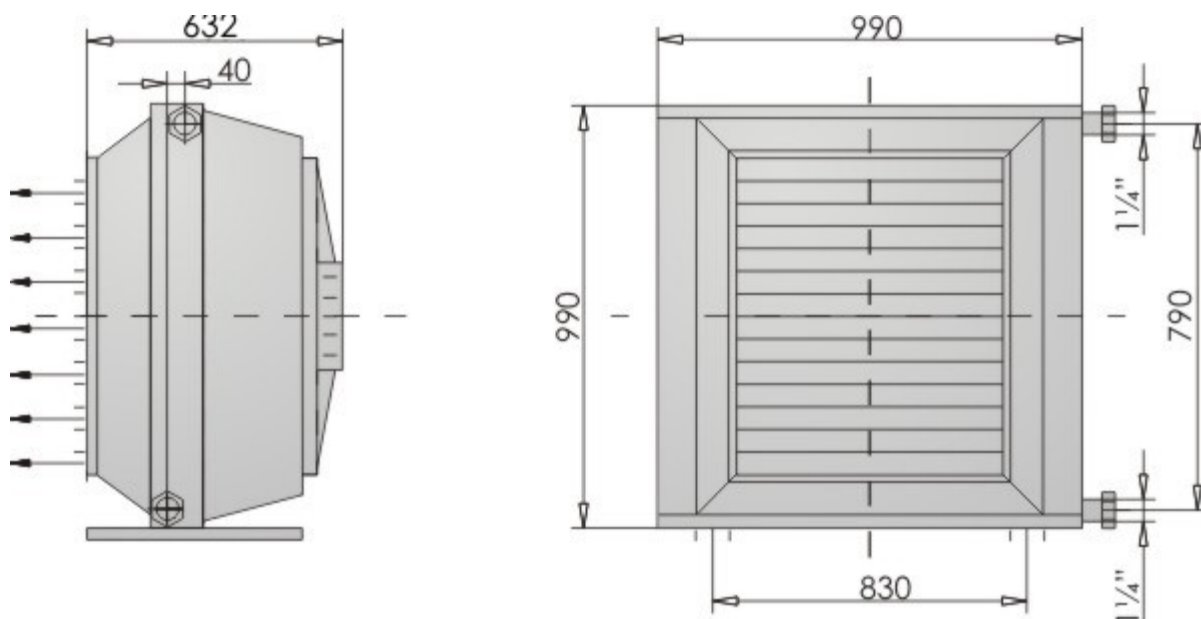


<b>90/70</b>	<b>-15</b>	201,7	35	13,1
	<b>0</b>	162,2	43	8,1
	<b>15</b>	124,7	50	5,0
<b>80/60</b>	<b>-15</b>	177,5	29	9,6
	<b>0</b>	139,2	36	6,3
	<b>15</b>	102,9	44	3,5
<b>70/50</b>	<b>-15</b>	153,7	23	6,7
	<b>0</b>	116,6	30	4,5
	<b>15</b>	81,6	38	2,2
<b>60/40</b>	<b>-15</b>	130,4	17	5,4
	<b>0</b>	94,4	25	2,9
	<b>15</b>	60,7	32	1,4

Operation noise level [dB(A)]	
At the distance of 1m	76
At the distance of 5m	66,5
Unit weight	
Weight [kg]	105

## Term-3-W-B-II

### DIMENSIONS



Fan specifications	
Voltage [V]	400
Motor power [kW]	1,2
Current [A]	2,4
Revolutions [rpm]	1330
IP	54
Insulation class	F
Operating temperature	to +50°C

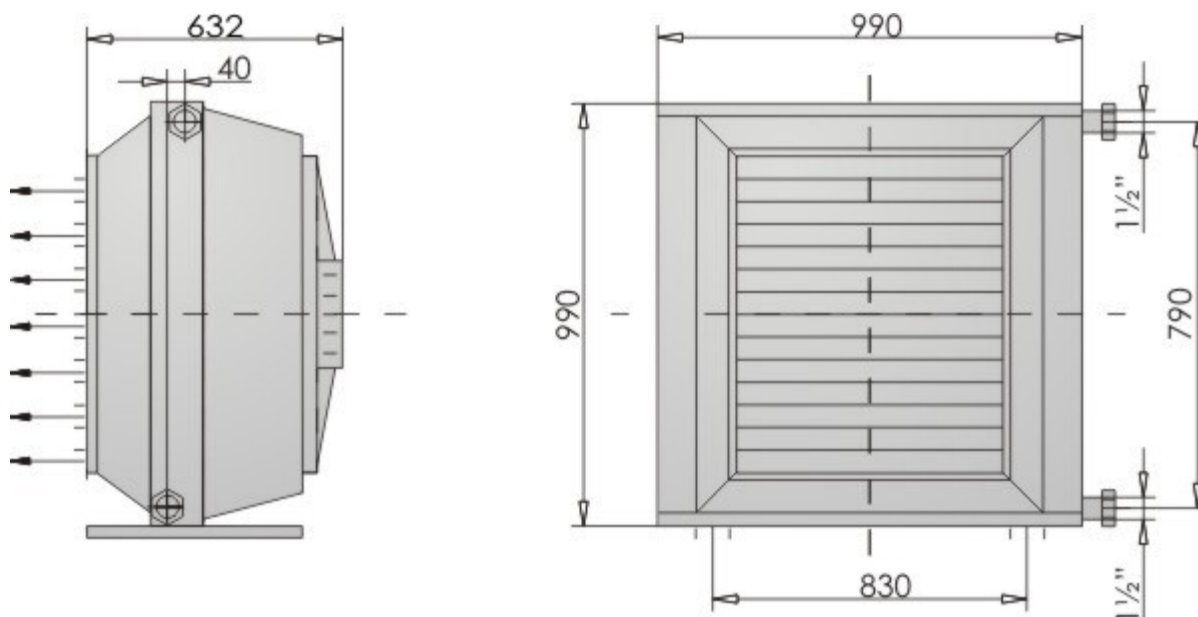
Thermal power of units with water heater				
Number of heater rows		II		
Air flow [m³/h]		10850		
Water capacity [dm³]		6,7		
Thermal power [kW], outflow air temperature [°C] and resistance of water flow [kPa]				
Parametry wody [°C]	Temp. powietrza napływ. [°C]	kW	°C	kPa
80/60	-15	93	7	5,8
	0	73	18	3,6
	15	55	29	2,0

<b>90/70</b>	<b>-15</b>	106	10	7,5
	<b>0</b>	86	21	4,9
	<b>15</b>	67	33	3,0
<b>110/80</b>	<b>-15</b>	117	13	4,1
	<b>0</b>	98	25	2,8
	<b>15</b>	79	36	1,8
<b>130/90</b>	<b>-15</b>	129	16	2,8
	<b>0</b>	110	28	2,0
	<b>15</b>	92	39	1,4
<b>150/100</b>	<b>-15</b>	142	19	2,2
	<b>0</b>	123	31	1,6
	<b>15</b>	105	43	1,2

Operation noise level [dB(A)]	
At the distance of 1m	76
At the distance of 5m	66,5
Unit weight	
Weight [kg]	175

## Term-3-W-B-III

### DIMENSIONS



Fan specifications	
Voltage [V]	400
Motor power [kW]	1,2
Current [A]	2,4
Revolutions [rpm]	1330
IP	54
Insulation class	F
Operating temperature	to +50°C

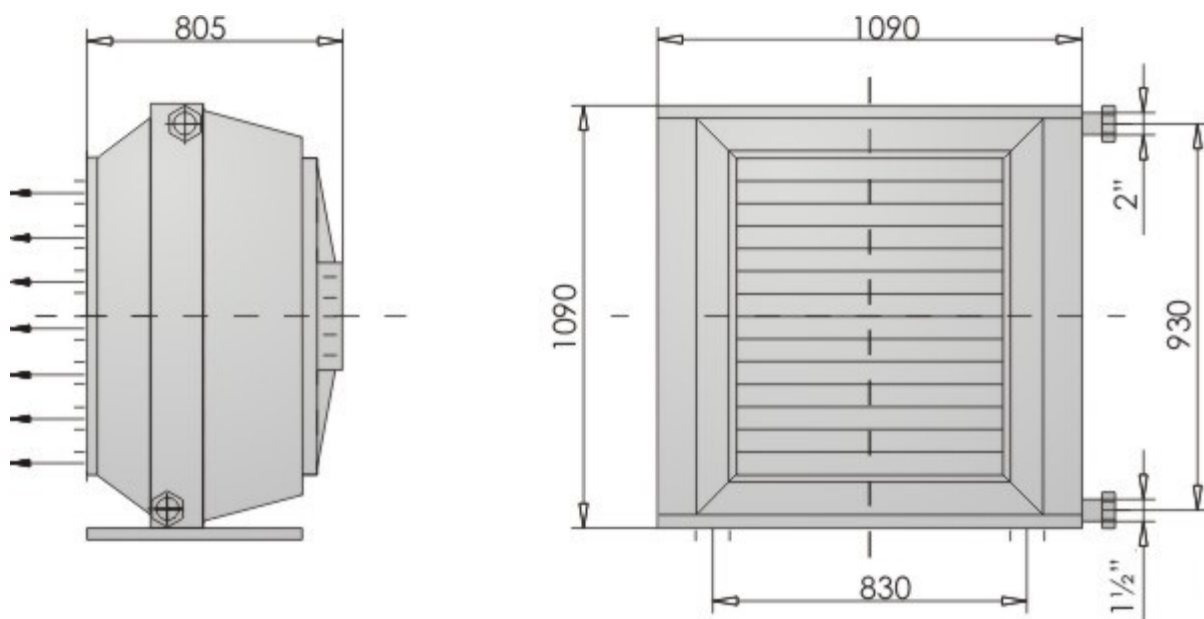
Thermal power of units with water heater				
Number of heater rows		III		
Air flow [m³/h]		10500		
Water capacity [dm³]		9,9		
Thermal power [kW], outflow air temperature [°C] and resistance of water flow [kPa]				
Water temp. [°C]	Inflow air temp. [°C]	kW	°C	kPa
80/60	-15	127	16	4,8
	0	100	26	3,0
	15	75	35	1,7

<b>90/70</b>	<b>-15</b>	144	21	6,2
	<b>0</b>	116	30	4,0
	<b>15</b>	91	40	2,5
<b>110/80</b>	<b>-15</b>	161	24	3,4
	<b>0</b>	133	35	2,4
	<b>15</b>	108	45	1,6
<b>130/90</b>	<b>-15</b>	178	29	2,4
	<b>0</b>	151	40	1,7
	<b>15</b>	125	50	1,2
<b>150/100</b>	<b>-15</b>	195	33	1,8
	<b>0</b>	169	44	1,4
	<b>15</b>	144	55	1,0

Operation noise level [dB(A)]	
At the distance of 1m	76
At the distance of 5m	66,5
Unit weight	
Weight [kg]	175

## Term-3-P-B-2,8

### DIMENSIONS



Fan specifications	
Voltage [V]	400
Motor power [kW]	1,2
Current [A]	2,4
Revolutions [rpm]	1330
IP	54
Insulation class	F
Operating temperature	to +50°C

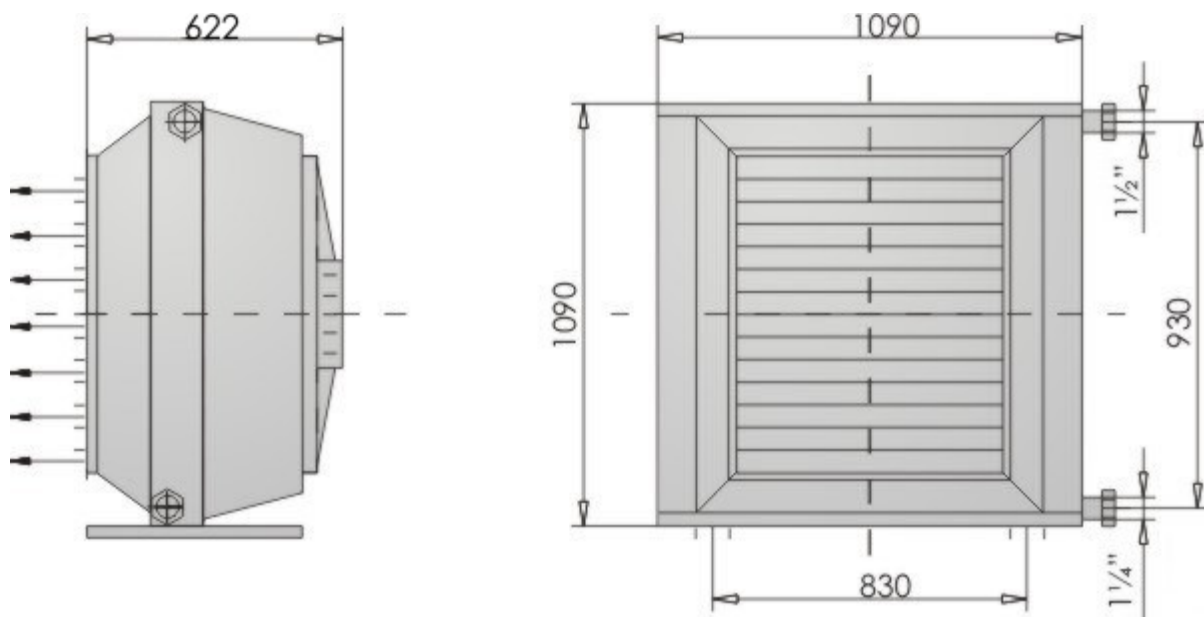
Thermal power of units with steam heater				
Ribs spacing [mm]		2,8		
Air flow [m³/h]		10850		
Thermal power [kW], outflow air temperature [°C] and resistance of water flow [kPa]				
Steam pressure [MPa]	Inflow air temp. [°C]	kW	°C	kPa
0,05	-15	189	30	389
	0	164	42	346
	15	140	53	295

<b>0,1</b>	<b>-15</b>	203	34	427
	<b>0</b>	178	45	374
	<b>15</b>	153	56	323
<b>0,2</b>	<b>-15</b>	223	38	469
	<b>0</b>	197	50	415
	<b>15</b>	173	62	363
<b>0,4</b>	<b>-15</b>	252	45	529
	<b>0</b>	226	58	475
	<b>15</b>	201	69	424
<b>0,6</b>	<b>-15</b>	271	50	571
	<b>0</b>	245	63	516
	<b>15</b>	220	74	463

<b>Operation noise level [dB(A)]</b>	
<b>At the distance of 1m</b>	76
<b>At the distance of 5m</b>	66,5
<b>Unit weight</b>	
<b>Weight [kg]</b>	180

## Term-3-P-B-5,0

### DIMENSIONS



Fan specifications	
Voltage [V]	400
Motor power [kW]	1,2
Current [A]	2,4
Revolutions [rpm]	1330
IP	54
Insulation class	F
Operating temperature	to +50°C

Thermal power of units with steam heater				
Ribs spacing [mm]			5,0	
Air flow [m³/h]			10850	
Thermal power [kW], outflow air temperature [°C] and quantity of steam[kg/h]				
Steam pressure [MPa]	Inflow air temp. [°C]	kW	°C	kg/h
0,05	-15	121	14	255
	0	106	27	223
	15	91	39	191

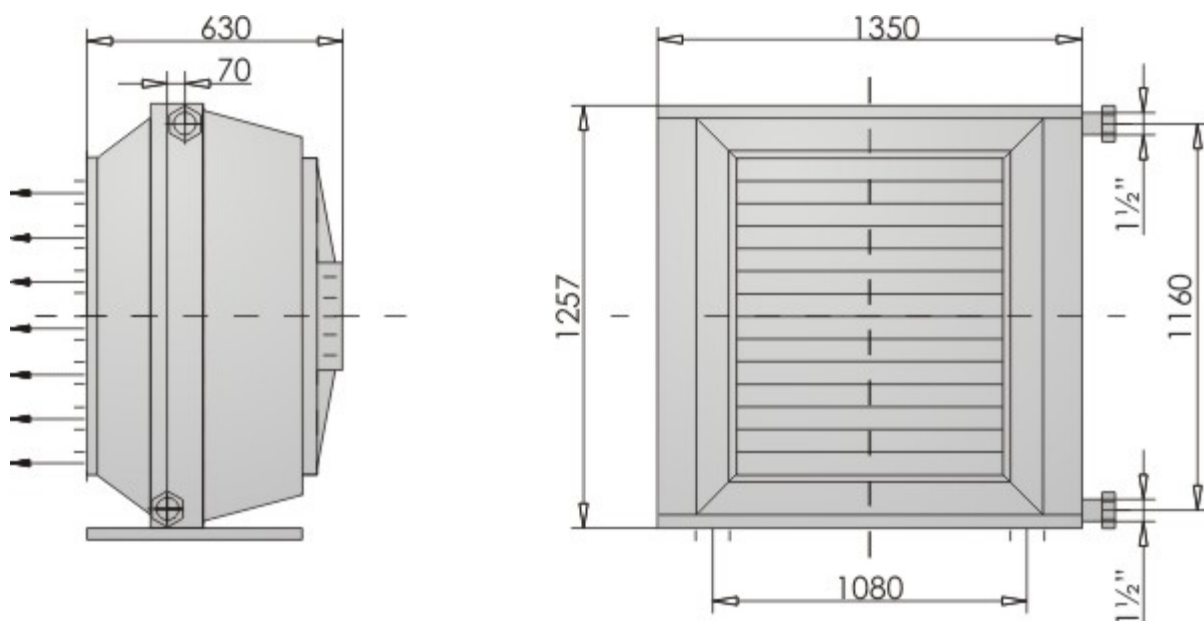


<b>0,1</b>	<b>-15</b>	130	16	274
	<b>0</b>	115	29	241
	<b>15</b>	99	42	209
<b>0,2</b>	<b>-15</b>	143	19	301
	<b>0</b>	127	32	268
	<b>15</b>	112	45	235
<b>0,4</b>	<b>-15</b>	161	24	339
	<b>0</b>	146	37	306
	<b>15</b>	130	50	274
<b>0,6</b>	<b>-15</b>	174	27	366
	<b>0</b>	157	42	330
	<b>15</b>	143	53	300

Operation noise level [dB(A)]	
At the distance of 1m	76
At the distance of 5m	66,5
Unit weight	
Weight [kg]	180

## Term-4-W-L-II

### DIMENSIONS



Fan specifications	
Voltage [V]	400
Motor power [kW]	2,6
Current [A]	4,8
Revolutions [rpm]	1330
IP	54
Insulation class	F
Operating temperature	to +65°C

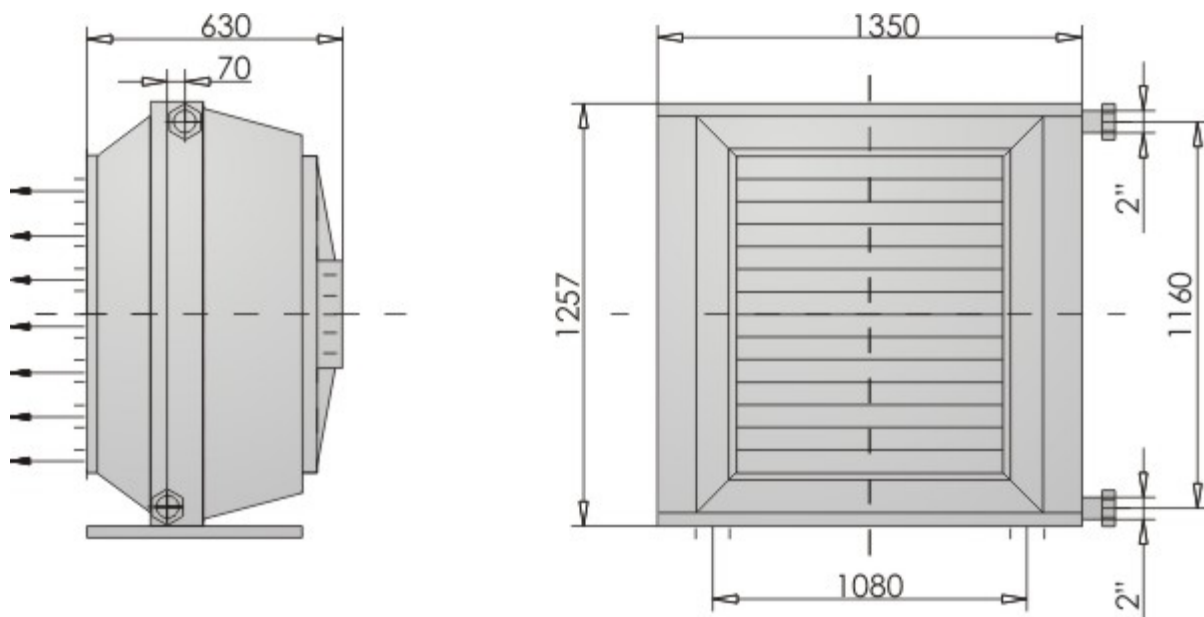
Thermal power of units with water heater				
Number of heater rows		II		
Air flow [m³/h]		19000		
Water capacity [dm³]		7,5		
Thermal power [kW], outflow air temperature [°C] and resistance of water flow [kPa]				
Water temp. [°C]	Inflow air temp. [°C]	kW	°C	kPa
110/80	-15	260,5	20	4,0
	0	215,9	31	2,7
	15	173,7	41	1,6

<b>90/70</b>	<b>-15</b>	241,4	18	4,2
	<b>0</b>	194,2	28	2,8
	<b>15</b>	150,5	37	1,7
<b>80/60</b>	<b>-15</b>	211,5	14	3,3
	<b>0</b>	165,6	24	2,0
	<b>15</b>	123,2	33	1,1
<b>70/50</b>	<b>-15</b>	182,2	10	2,5
	<b>0</b>	137,7	20	1,5
	<b>15</b>	96,7	29	1,0
<b>60/40</b>	<b>-15</b>	153,5	6	1,7
	<b>0</b>	110,6	16	1,1
	<b>15</b>	71,0	25	1,0

Operation noise level [dB(A)]	
At the distance of 1m	80,5
At the distance of 5m	71
Unit weight	
Weight [kg]	157

## Term-4-W-L-III

### DIMENSIONS



Fan specifications	
Voltage [V]	400
Motor power [kW]	2,6
Current [A]	4,8
Revolutions [rpm]	1330
IP	54
Insulation class	F
Operating temperature	to +65°C

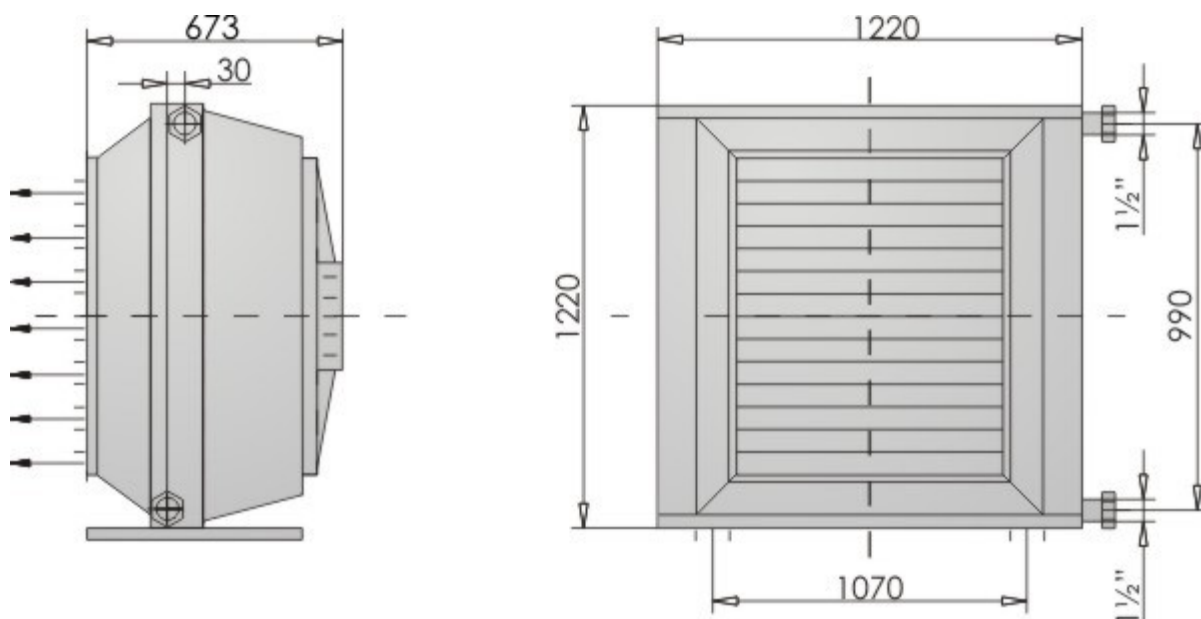
Thermal power of units with water heater				
Number of heater rows		III		
Air flow [m³/h]		18500		
Water capacity [dm³]		11,5		
Thermal power [kW], outflow air temperature [°C] and resistance of water flow [kPa]				
Water temp. [°C]	Inflow air temp. [°C]	kW	°C	kPa
110/80	-15	348,8	34	3,1
	0	289,0	43	2,0
	15	232,7	52	1,2

<b>90/70</b>	<b>-15</b>	314,8	29	3,2
	<b>0</b>	253,2	38	2,1
	<b>15</b>	196,9	45	1,3
<b>80/60</b>	<b>-15</b>	276,6	24	2,5
	<b>0</b>	216,7	32	1,5
	<b>15</b>	162,1	40	1,1
<b>70/50</b>	<b>-15</b>	239,1	18	1,9
	<b>0</b>	181,1	27	1,1
	<b>15</b>	128,0	34	1,0
<b>60/40</b>	<b>-15</b>	202,3	13	1,3
	<b>0</b>	146,1	22	1,0
	<b>15</b>	94,7	29	1,0

Operation noise level [dB(A)]	
At the distance of 1m	80,5
At the distance of 5m	71
Unit weight	
Weight [kg]	157

## Term-4-W-B-II

### DIMENSIONS



Fan specifications	
Voltage [V]	400
Motor power [kW]	2,6
Current [A]	4,8
Revolutions [rpm]	1330
IP	54
Insulation class	F
Operating temperature	to +65°C

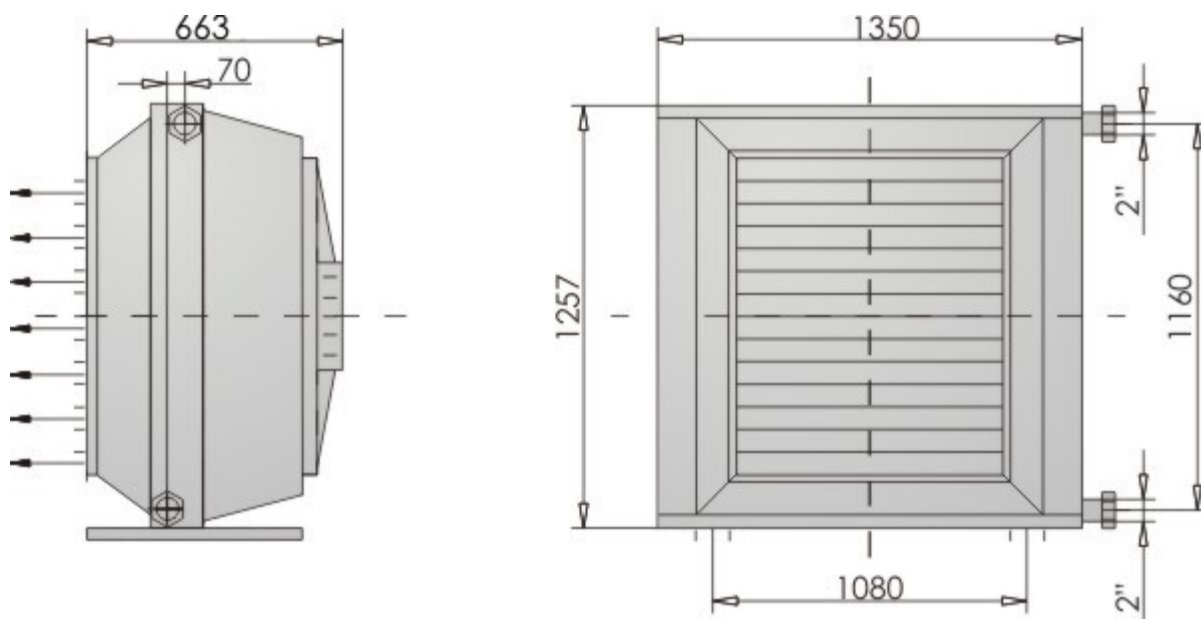
Thermal power of units with water heater				
Number of heater rows		II		
Ait flow [m³/h]		19000		
Water capacity [dm³]		10,6		
Thermal power [kW], outflow air temperature [°C] and resistance of water flow [kPa]				
Water temp. [°C]	Inflow air temp. [°C]	kW	°C	kPa
110/80	-15	164	7	16,9
	0	129	18	10
	15	96	29	5,8

<b>90/70</b>	<b>-15</b>	186	10	21
	<b>0</b>	151	22	14
	<b>15</b>	117	33	8,6
<b>80/60</b>	<b>-15</b>	201	13	11,0
	<b>0</b>	187	25	8,2
	<b>15</b>	139	36	5,4
<b>70/50</b>	<b>-15</b>	228	15	8,0
	<b>0</b>	194	29	6,2
	<b>15</b>	162	40	4,1
<b>60/40</b>	<b>-15</b>	250	19	6,3
	<b>0</b>	217	31	4,7
	<b>15</b>	184	43	3,4

Operation noise level [dB(A)]	
At the distance of 1m	80,5
At the distance of 5m	71
Unit weight	
Weight [kg]	215

## Term-4-W-B-III

### DIMENSIONS



Fan specifications	
Voltage [V]	400
Motor power [kW]	2,6
Current [A]	4,8
Revolutions [rpm]	1330
IP	54
Insulation class	F
Operating temperature	to +65°C

Thermal power of units with water heater				
Number of heater rows		III		
Air flow [m³/h]		18500		
Water capacity [dm³]		16,0		
Thermal power [kW], outflow air temperature [°C] and resistance of water flow[kPa]				
Water temp. [°C]	Inflow air temp. [°C]	kW	°C	kPa
110/80	-15	223	16	13,0
	0	176	26	8,6
	15	131	36	4,8

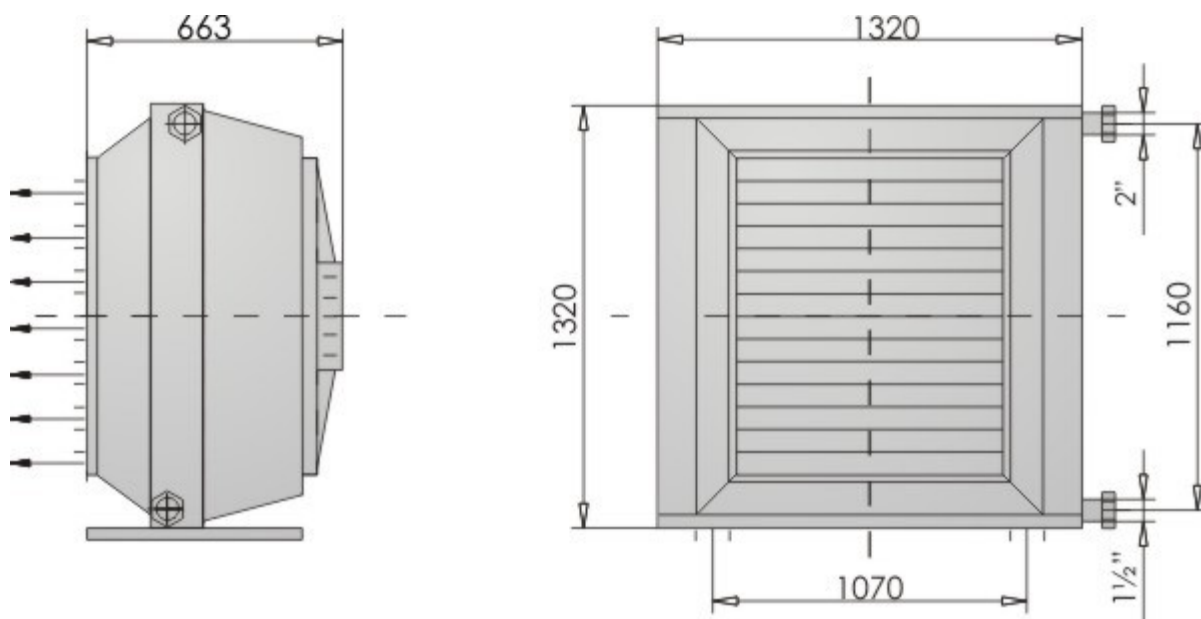


<b>90/70</b>	<b>-15</b>	253	21	18,0
	<b>0</b>	205	30	11,0
	<b>15</b>	159	40	7,1
<b>80/60</b>	<b>-15</b>	282	24	9,9
	<b>0</b>	235	35	6,8
	<b>15</b>	190	45	4,5
<b>70/50</b>	<b>-15</b>	313	29	6,8
	<b>0</b>	266	40	5,0
	<b>15</b>	222	50	3,4
<b>60/40</b>	<b>-15</b>	344	33	5,3
	<b>0</b>	298	44	4,0
	<b>15</b>	253	55	2,8

Operation noise level [dB(A)]	
At the distance of 1m	80,5
At the distance of 5m	71
Unit weight	
Weight [kg]	215

## Term-4-P-B-2,8

### DIMENSIONS



Fan specifications	
Voltage [V]	400
Motor power [kW]	2,6
Current [A]	4,8
Revolutions [rpm]	1330
IP	54
Insulation class	F
Operating temperature	to +65°C

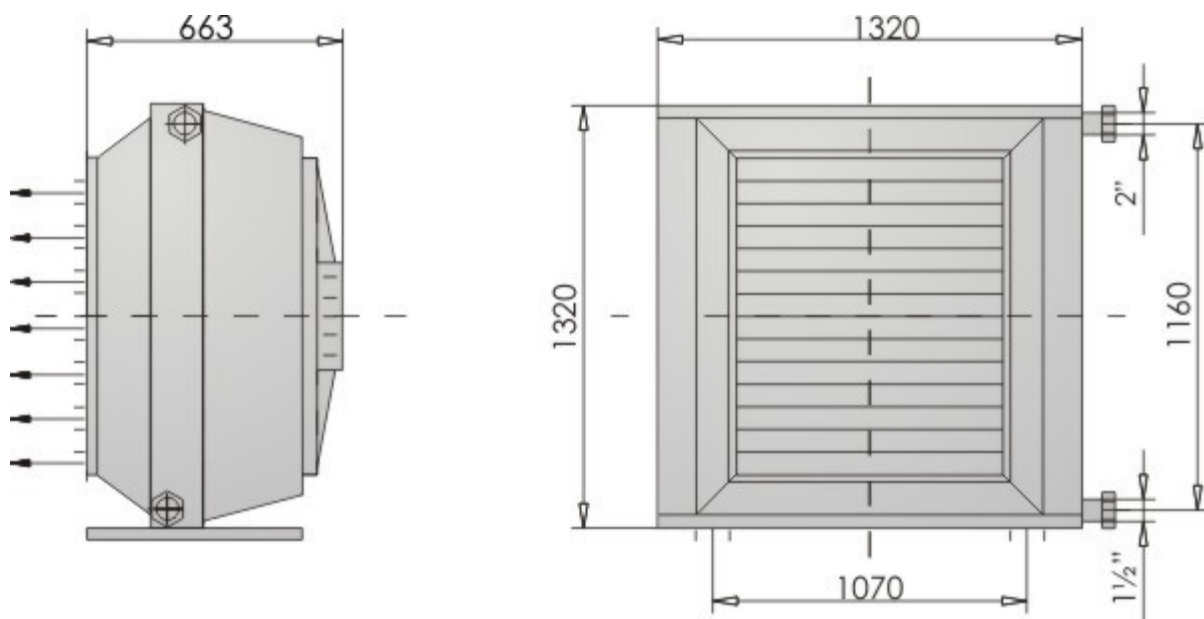
Thermal power of units with steam heater				
Ribs spacing [mm]			2,8	
Air flow [m³/h]			19000	
Thermal power [kW], outflow air temperature [°C] and quantity of steam[kg/h]				
Steam pressure [MPa]	Inflow air temp. [°C]	kW	°C	kg/h
0,05	-15	320	29	673
	0	278	40	585
	15	237	51	499

<b>0,1</b>	<b>-15</b>	343	32	722
	<b>0</b>	301	44	633
	<b>15</b>	260	55	546
<b>0,2</b>	<b>-15</b>	377	37	792
	<b>0</b>	334	49	702
	<b>15</b>	292	60	615
<b>0,4</b>	<b>-15</b>	426	43	894
	<b>0</b>	382	56	803
	<b>15</b>	340	67	715
<b>0,6</b>	<b>-15</b>	<b>459</b>	48	964
	<b>0</b>	415	60	872
	<b>15</b>	372	72	783

Operation noise level [dB(A)]	
At the distance of 1m	80,5
At the distance of 5m	71
Unit weight	
Weight [kg]	215

## Term-4-P-B-5,0

### DIMENSIONS



Fan specifications	
Voltage [V]	400
Motor power [kW]	2,6
Current [A]	4,8
Revolutions [rpm]	1330
IP	54
Insulation class	F
Operating temperature	to +65°C

Thermal power of units with steam heater				
Ribs spacing [mm]		5,0		
Air flow [m³/h]		19000		
Engine connection				
Thermal power [kW], outflow air temperature [°C] and quantity of steam[kg/h]				
Steam pressure [MPa]	Inflow air temp. [°C]	kW	°C	kg/h
0,05	-15	320	29	673
	0	278	40	585
	15	237	51	499

<b>0,1</b>	<b>-15</b>	343	32	722
	<b>0</b>	301	44	633
	<b>15</b>	260	55	546
<b>0,2</b>	<b>-15</b>	377	37	792
	<b>0</b>	334	49	702
	<b>15</b>	292	60	615
<b>0,4</b>	<b>-15</b>	426	43	894
	<b>0</b>	382	56	803
	<b>15</b>	340	67	715
<b>0,6</b>	<b>-15</b>	<b>459</b>	48	964
	<b>0</b>	415	60	872
	<b>15</b>	372	72	7830

Operation noise level [dB(A)]	
At the distance of 1m	80,5
At the distance of 5m	71
Unit weight	
Weight [kg]	255